

His-Tag Ab

[References\(16\)](#) [Images\(4\)](#)

| | | |
|--------------|-----------------|-----------------------|
| Cat.#: T0009 | Concn.: ~1mg/ml | Mol.Wt.: |
| Size: | Source: Mouse | Clonality: Monoclonal |

Application: WB 1:3000-1:10000, IF/ICC: 1:200, IP 1:100-1:500
*The optimal dilutions should be determined by the end user.

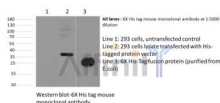
Reactivity: All

Storage: Mouse IgG1 in phosphate buffered saline (without Mg²⁺ and Ca²⁺), pH 7.4, 150mM NaCl, 0.02% sodium azide and 50% glycerol. Store at -20 °C. Stable for 12 months from date of receipt.

Purification: Affinity-chromatography.

Immunogen: A synthetic peptide HHHHHH coupled to KLH.

Description: N/A



Western blot analysis of His-Tag Mouse Monoclonal Ab expression in 6*His-tag fusion protein sample

IMPORTANT: For western blot, incubate membrane with diluted primary Ab in 5% w/v milk, 1X TBS, 0.1% Tween@20 at 4°C with gentle shaking, overnight.

For Research Use Only. Not for use in diagnostic and therapeutic procedures. Not for resale without express authorization.