

beta-Actin Ab

[References\(172\)](#) [Images\(77\)](#)

Cat.#: T0022	Concn.: ~1mg/ml	Mol.Wt.: 43KD
Size:	Source: Mouse	Clonality: Monoclonal

Application: WB 1:10000-1:320000, IHC 1:50-1:200, IF/ICC: 1:200
*The optimal dilutions should be determined by the end user.

Reactivity: Human,Mouse,Rat,Pig,Zebrafish,Bovine,Sheep,Rabbit,Goat,Guinea pig,Dog,Monkey,Hamster,Duck,Chicken,Fish

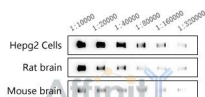
Storage: Mouse IgG1 in phosphate buffered saline (without Mg²⁺ and Ca²⁺), pH 7.4, 150mM NaCl, 0.02% sodium azide and 50% glycerol.Stable for 24 months from date of receipt. Store at -20 °C. Stable for 12 months from date of receipt.

Purification: Affinity-chromatography.

Immunogen: Full-length beta-Actin protein of human.

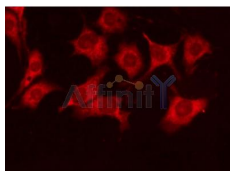
Uniprot: P60709

Description: beta-Actin is one of six different actin isoforms that have been identified. The actin molecules found in cells of various species and tissues tend to be very similar in their immunological and physical properties. Therefore, Antibodies against beta-Actin are useful as loading controls for Western Blotting. However it should be noted that levels of beta-Actin may not be stable in certain cells. For example, expression of beta-Actin in adipose tissue is very low and therefore it should not be used as loading control for these tissues.



Western blot analysis of various lysates, using beta-Actin Mouse Monoclonal Antibody at different dilutions.

Western blot analysis of various lysates, using beta-Actin Mouse Monoclonal Ab at different dilutions.



IF analysis of Hela with T0022 diluted at 1:500.

IMPORTANT: For western blot, incubate membrane with diluted primary Ab in 5% w/v milk , 1X TBS, 0.1% Tween@20 at 4°C with gentle shaking, overnight.

For Research Use Only. Not for use in diagnostic and therapeutic procedures. Not for resale without express authorization.