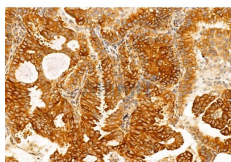


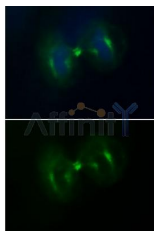
Tubulin beta Ab

[References\(179\)](#) [Images\(44\)](#)

Cat.#: AF7011	Concn.: ~1mg/ml	Mol.Wt.: 55kDa
Size:	Source: Rabbit	Clonality: Polyclonal
Application:	WB 1:1000-1:5000, IHC 1:50-1:200, IF/ICC 1:100-1:500 *The optimal dilutions should be determined by the end user.	
Reactivity:	Human,Mouse,Rat	
Storage:	Rabbit IgG in phosphate buffered saline , pH 7.4, 150mM NaCl, 0.02% sodium azide and 50% glycerol. Store at -20 °C. Stable for 12 months from date of receipt.	
Purification:	The antiserum was purified by peptide affinity chromatography using SulfoLink™ Coupling Resin (Thermo Fisher Scientific).	
Immunogen:	A synthesized peptide derived from human Tubulin beta.	
Uniprot:	P07437	
Description:	TUBB3 Tubulin is the major constituent of microtubules. It binds two moles of GTP, one at an exchangeable site on the beta chain and one at a non-exchangeable site on the alpha-chain. TUBB3 plays a critical role in proper axon guidance and maintenance.	



AF7011 at 1/100 staining Human normal tissues adjacent to lung cancer by IHC-P. The sample was formaldehyde fixed and a heat mediated antigen retrieval step in citrate buffer was performed. The sample was then blocked and incubated with the primary Ab at 4°C overnight. An HRP conjugated anti-Rabbit Ab was used as the secondary Ab.



Immunofluorescence analysis of HepG2 cells during mitosis, using tubulin rabbit pAb. Green: Goat Anti-Rabbit IgG(H+L) Alexa Fluor488. Blue: DAPI.

IMPORTANT: For western blot, incubate membrane with diluted primary Ab in 5% w/v milk , 1X TBS, 0.1% Tween@20 at 4°C with gentle shaking, overnight.



Affinity Biosciences

website: www.affbiotech.com

order: order@affbiotech.com

For Research Use Only. Not for use in diagnostic and therapeutic procedures. Not for resale without express authorization.