

beta Actin Ab

[References\(1077\)](#) [Images\(195\)](#)

Cat.#: AF7018
Size:

Concn.: ~1mg/ml
Source: Rabbit

Mol.Wt.: 43kDa
Clonality: Polyclonal

Application:

WB 1:3000-1:20000, IHC 1:50-1:200, IF/ICC 1:100-1:500

*The optimal dilutions should be determined by the end user.

Reactivity:

Human,Mouse,Rat,Pig,Zebrafish,Bovine,Rabbit,Dog,Monkey,Fish

Storage:

Rabbit IgG in phosphate buffered saline , pH 7.4, 150mM NaCl, 0.02% sodium azide and 50% glycerol. Store at -20 °C. Stable for 12 months from date of receipt.

Purification:

The antiserum was purified by peptide affinity chromatography using SulfoLink™ Coupling Resin (Thermo Fisher Scientific).

Immunogen:

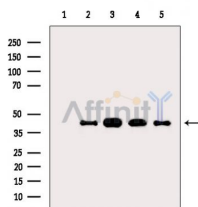
A synthesized peptide derived from human Beta actin.

Uniprot:

P60709

Description:

Actin, a ubiquitous eukaryotic protein, is the major component of the cytoskeleton. At least six isoforms are known in mammals. Nonmuscle β - and γ -actin, also known as cytoplasmic actin, are predominantly expressed in nonmuscle cells, controlling cell structure and motility.



Western blot analysis of extracts from various samples, using beta Actin Ab.

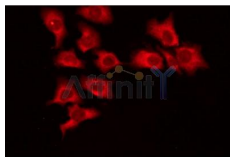
Lane 1: Rat kidney, blocked with antigen-specific peptides.

Lane 2: Rat kidney.

Lane 3: Mouse kidney.

Lane 4: Hepg2 cells(serum starvation treatment).

Lane 5: Hela cells(heat-shock treatment).



AF7018 staining HEPG2 cells by ICC/IF. The sample were fixed with PFA and permeabilized in 0.1% Triton X-100, then blocked in 10% serum for 45 minutes at 25°C. The primary Ab was diluted at 1/200 and incubated with the sample for 1 hour at 37°C. An Alexa Fluor 594 conjugated goat anti-rabbit IgG (H+L) Ab(Red), diluted at 1/600 was used as secondary Ab.

IMPORTANT: For western blot, incubate membrane with diluted primary Ab in 5% w/v milk , 1X TBS, 0.1% Tween@20 at 4°C with gentle shaking, overnight.



Affinity Biosciences

website: www.affbiotech.com

order: order@affbiotech.com

For Research Use Only. Not for use in diagnostic and therapeutic procedures. Not for resale without express authorization.