

## alpha SMA Ab

[References\(35\)](#) [Images\(13\)](#)

Cat.#: BF9212	Concn.: ~1mg/ml	Mol.Wt.: 42kDa
Size:	Source: Mouse	Clonality: Monoclonal

**Application:** WB 1:1000-10000, IP 1:200, IF/ICC 1:200  
\*The optimal dilutions should be determined by the end user.

**Reactivity:** Human,Mouse,Rat

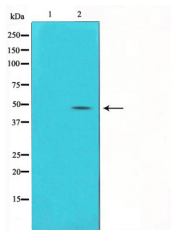
**Storage:** 1mg/ml in PBS, pH 7.4. Store at -20 °C. Stable for 12 months from date of receipt.

**Purification:** affinity purification.

**Immunogen:** A Mouse monoclonal antibody is prepared by immunizing recombinant protein.

**Uniprot:** P62736

**Description:** Actin, alpha skeletal muscle is a protein that in humans is encoded by the ACTA1 gene. Actin alpha 1 which is expressed in skeletal muscle is one of six different actin isoforms which have been identified. Actins are highly conserved proteins that are involved in cell motility, structure and integrity. Alpha actins are a major constituent of the contractile apparatus



Western blot analysis of Hela with alpha SMA Ab diluted at 1:5,000.

**IMPORTANT:** For western blot, incubate membrane with diluted primary Ab in 5% w/v milk, 1X TBS, 0.1% Tween@20 at 4°C with gentle shaking, overnight.

For Research Use Only. Not for use in diagnostic and therapeutic procedures. Not for resale without express authorization.