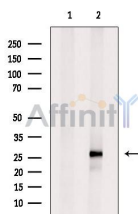


DIRAS3 Ab

[Images\(3\)](#)

Cat.#: DF2200	Concn.: ~1mg/ml	Mol.Wt.: 26 kDa.
Size:	Source: Rabbit	Clonality: Polyclonal

Application:	WB 1:500-1:2000, IHC 1:50-1:200 *The optimal dilutions should be determined by the end user.
Reactivity:	Human
Storage:	Rabbit IgG in phosphate buffered saline, pH 7.4, 150mM NaCl, 0.02% sodium azide and 50% glycerol. Store at -20 °C. Stable for 12 months from date of receipt.
Purification:	The antiserum was purified by peptide affinity chromatography using SulfoLink™ Coupling Resin (Thermo Fisher Scientific).
Immunogen:	A synthesized peptide derived from human DIRAS3, corresponding to a region within C-terminal amino acids.
Uniprot:	O95661
Description:	Expressed in normal ovarian and breast epithelial cells but not in ovarian and breast cancers



Western blot analysis of extracts from MDA-MB-231 cells, using DIRAS3 Ab. The lane on the left was treated with blocking peptide.

IMPORTANT: For western blot, incubate membrane with diluted primary Ab in 5% w/v milk, 1X TBS, 0.1% Tween@20 at 4°C with gentle shaking, overnight.

For Research Use Only. Not for use in diagnostic and therapeutic procedures. Not for resale without express authorization.