

NFE2L1 Ab

[Images\(2\)](#)

Cat.#: DF2217	Concn.: ~1mg/ml	Mol.Wt.: 82 kDa
Size:	Source: Rabbit	Clonality: Polyclonal

Application: WB 1:500-1:2000, IHC 1:50-1:200
*The optimal dilutions should be determined by the end user.

Reactivity: Human, Mouse

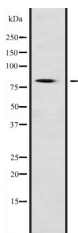
Storage: Rabbit IgG in phosphate buffered saline, pH 7.4, 150mM NaCl, 0.02% sodium azide and 50% glycerol. Store at -20 °C. Stable for 12 months from date of receipt.

Purification: The antiserum was purified by peptide affinity chromatography using SulfoLink™ Coupling Resin (Thermo Fisher Scientific).

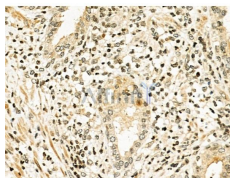
Immunogen: A synthesized peptide derived from human NFE2L1, corresponding to a region within N-terminal amino acids.

Uniprot: Q14494

Description: Anti-Nuclear Factor Erythroid 2 Related Factor 1 antibody - C-terminal (ab186143) at 1 g/ml + Mouse testis lysate at 10 g



Western blot analysis of NFE2L1 expression in Mouse testis lysates.



DF2217 at 1/100 staining Human colorectal cancer by IHC-P. The sample was formaldehyde fixed and a heat mediated antigen retrieval step in citrate buffer was performed. The sample was then blocked and incubated with the primary Ab at 4°C overnight. An HRP conjugated anti-Rabbit Ab was used as the secondary Ab.

IMPORTANT: For western blot, incubate membrane with diluted primary Ab in 5% w/v milk, 1X TBS, 0.1% Tween@20 at 4°C with gentle shaking, overnight.

procedures. Not for resale without express authorization.