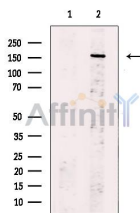


CD109 Ab

[References\(1\)](#) [Images\(2\)](#)

Cat.#: DF2291	Concn.: ~1mg/ml	Mol.Wt.: 162 kDa
Size:	Source: Rabbit	Clonality: Polyclonal

Application:	WB 1:500-1:2000 *The optimal dilutions should be determined by the end user.
Reactivity:	Human,Mouse
Storage:	Rabbit IgG in phosphate buffered saline, pH 7.4, 150mM NaCl, 0.02% sodium azide and 50% glycerol. Store at -20 °C. Stable for 12 months from date of receipt.
Purification:	The antiserum was purified by peptide affinity chromatography using SulfoLink™ Coupling Resin (Thermo Fisher Scientific).
Immunogen:	A synthesized peptide derived from human CD109, corresponding to a region within C-terminal amino acids.
Uniprot:	Q6YHK3
Description:	Modulates negatively TGFB1 signaling in keratinocytes



Western blot analysis of CD109 expression in Mouse cerebellum tissue lysates ,The lane on the left was treated with the antigen-specific peptide.

IMPORTANT: For western blot, incubate membrane with diluted primary Ab in 5% w/v milk , 1X TBS, 0.1% Tween@20 at 4°C with gentle shaking, overnight.

For Research Use Only. Not for use in diagnostic and therapeutic procedures. Not for resale without express authorization.