

CENPS Ab

[Images\(13\)](#)

Cat.#: DF2318	Concn.: ~1mg/ml	Mol.Wt.: 20kDa
Size:	Source: Rabbit	Clonality: Polyclonal

Application: WB 1:500-1:2000, IHC 1:50-1:200
*The optimal dilutions should be determined by the end user.

Reactivity: Human, Mouse, Rat

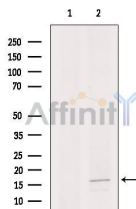
Storage: Rabbit IgG in phosphate buffered saline, pH 7.4, 150mM NaCl, 0.02% sodium azide and 50% glycerol. Store at -20 °C. Stable for 12 months from date of receipt.

Purification: The antiserum was purified by peptide affinity chromatography using SulfoLink™ Coupling Resin (Thermo Fisher Scientific).

Immunogen: A synthesized peptide derived from human CENPS, corresponding to a region within C-terminal amino acids.

Uniprot: Q8N2Z9

Description: DNA-binding component of the FA core complex involved in DNA damage repair and genome maintenance. Required for optimal chromatin association of the FA core complex. Required for efficient damage-induced monoubiquitination and focus formation of FANCD2. Stabilizes FAAD24, FANCM and STRA13/CENPX in the FA core complex. Plays a role in DNA interstrand cross-linking (ICL) repair and in recovery of replication forks stalled by topoisomerase I-DNA cleavage intermediates induced by camptothecin. As a component of the APITD1/CENPS complex, is also essential for the stable assembly of the outer kinetochore. Component of the CENPA-CAD (nucleosome distal) complex, a complex recruited to centromeres which is involved in assembly of kinetochore proteins, mitotic progression and chromosome segregation



Western blot analysis of extracts from HepG2 cells, using CENPS Ab. The lane on the left was treated with blocking peptide.



DF2318 at 1/100 staining Rat testis tissue by IHC-P. The sample was formaldehyde fixed and a heat mediated antigen retrieval step in citrate buffer was performed. The sample was then blocked and incubated with the primary Ab at 4°C overnight. An HRP conjugated anti-Rabbit Ab was used as the secondary Ab.

IMPORTANT: For western blot, incubate membrane with diluted primary Ab in 5% w/v milk , 1X TBS, 0.1% Tween@20 at 4°C with gentle shaking, overnight.

For Research Use Only. Not for use in diagnostic and therapeutic procedures. Not for resale without express authorization.