

## CX3CR1 Ab

[Images\(3\)](#)

Cat.#: DF2325	Concn.: ~1mg/ml	Mol.Wt.: 50 kDa
Size:	Source: Rabbit	Clonality: Polyclonal

**Application:** WB 1:500-1:2000, IF/ICC 1:100-1:500  
\*The optimal dilutions should be determined by the end user.

**Reactivity:** Human,Mouse,Rat

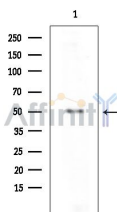
**Storage:** Rabbit IgG in phosphate buffered saline, pH 7.4, 150mM NaCl, 0.02% sodium azide and 50% glycerol. Store at -20 °C. Stable for 12 months from date of receipt.

**Purification:** The antiserum was purified by peptide affinity chromatography using SulfoLink™ Coupling Resin (Thermo Fisher Scientific).

**Immunogen:** A synthesized peptide derived from human CX3CR1, corresponding to a region within N-terminal amino acids.

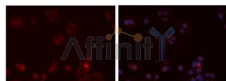
**Uniprot:** P49238

**Description:** Receptor for the CX3C chemokine fractalkine and mediates both its adhesive and migratory functions. Acts as coreceptor with CD4 for HIV-1 virus envelope protein (in vitro). Isoform 2 and isoform 3 seem to be more potent HIV-1 coreceptors than isoform 1.



Western blot analysis of extracts from Rat brain, using CX3CR1 Ab at 1/1000 dilution.

Observed bands:50kD.



DF2325 staining HeLa cells by IF/ICC. The sample were fixed with PFA and permeabilized in 0.1% Triton X-100, then blocked in 10% serum for 45 minutes at 25°C. The primary Ab was diluted at 1/200 and incubated with the sample for 1 hour at 37°C. An Alexa Fluor 594 conjugated goat anti-rabbit IgG (H+L) Ab(Red), diluted at 1/600 was used as secondary Ab.

**IMPORTANT:** For western blot, incubate membrane with diluted primary Ab in 5% w/v milk, 1X TBS, 0.1% Tween@20 at 4°C with gentle shaking, overnight.



**Affinity Biosciences**

website: [www.affbiotech.com](http://www.affbiotech.com)

order: [order@affbiotech.com](mailto:order@affbiotech.com)

---

For Research Use Only. Not for use in diagnostic and therapeutic procedures. Not for resale without express authorization.