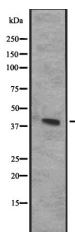


## CXCR3 Ab

[Images\(1\)](#)

|               |   |                       |
|---------------|---|-----------------------|
| Cat.#: DF2326 | Concn.: ~1mg/ml   | Mol.Wt.: 41 kDa       |
| Size:         | Source: Rabbit  | Clonality: Polyclonal |
| Application:  | WB 1:500-1:2000<br>*The optimal dilutions should be determined by the end user.   |                       |
| Reactivity:   | Human,Mouse,Rat   |                       |
| Storage:      | Rabbit IgG in phosphate buffered saline, pH 7.4, 150mM NaCl, 0.02% sodium azide and 50% glycerol. Store at -20 °C. Stable for 12 months from date of receipt.   |                       |
| Purification: | The antiserum was purified by peptide affinity chromatography using SulfoLink™ Coupling Resin (Thermo Fisher Scientific).   |                       |
| Immunogen:    | A synthesized peptide derived from human CXCR3, corresponding to a region within the internal amino acids.  |                       |
| Uniprot:      | P49682  |                       |
| Description:  | Receptor for CXCL9, CXCL10 and CXCL11 and mediates the proliferation of human mesangial cells (HMC).;Isoform 2 is a receptor for CXCL4 and also mediates the inhibitory activities of CXCL9, CXCL10 and CXCL11 on the growth of human microvascular endothelial cells (HMVEC). May play a role in angiogenesis.;Isoform 3 mediates the activity of CXCL11 |                       |



Western blot analysis of CXCR3 expression in Hela cell lysates.

**IMPORTANT:** For western blot, incubate membrane with diluted primary Ab in 5% w/v milk , 1X TBS, 0.1% Tween@20 at 4°C with gentle shaking, overnight.

For Research Use Only. Not for use in diagnostic and therapeutic procedures. Not for resale without express authorization.