

JHD3D Ab

[Images\(3\)](#)

Cat.#: DF2411	Concn.: ~1mg/ml	Mol.Wt.: 52 kDa
Size:	Source: Rabbit	Clonality: Polyclonal

Application: WB 1:500-1:2000, IHC 1:50-1:200
*The optimal dilutions should be determined by the end user.

Reactivity: Human, Rat

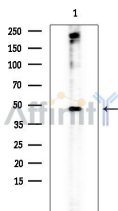
Storage: Rabbit IgG in phosphate buffered saline, pH 7.4, 150mM NaCl, 0.02% sodium azide and 50% glycerol. Store at -20 °C. Stable for 12 months from date of receipt.

Purification: The antiserum was purified by peptide affinity chromatography using SulfoLink™ Coupling Resin (Thermo Fisher Scientific).

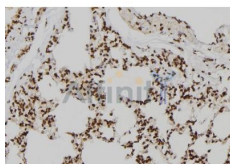
Immunogen: A synthesized peptide derived from human JHD3D, corresponding to a region within N-terminal amino acids.

Uniprot: Q6B0I6

Description: Histone demethylase that specifically demethylates 'Lys-9' of histone H3, thereby playing a central role in histone code. Does not demethylate histone H3 'Lys-4', H3 'Lys-27', H3 'Lys-36' nor H4 'Lys-20'. Demethylates both di- and trimethylated H3 'Lys-9' residue, while it has no activity on monomethylated residues. Demethylation of Lys residue generates formaldehyde and succinate.



Western blot analysis of extracts from Rat brain, using JHD3D Ab at 1/1000 dilution.
Observed bands: 48kD.



DF2411 at 1/100 staining Rat lung tissue by IHC-P. The sample was formaldehyde fixed and a heat mediated antigen retrieval step in citrate buffer was performed. The sample was then blocked and incubated with the Ab for 1.5 hours at 22°C. An HRP conjugated goat anti-rabbit Ab was used as the secondary Ab.

IMPORTANT: For western blot, incubate membrane with diluted primary Ab

in 5% w/v milk , 1X TBS, 0.1% Tween@20 at 4°C with gentle shaking,
overnight.

For Research Use Only. Not for use in diagnostic and therapeutic
procedures. Not for resale without express authorization.