

ZNF71 Ab

[Images\(2\)](#)

Cat.#: DF2474	Concn.: ~1mg/ml	Mol.Wt.: 54 kDa
Size:	Source: Rabbit	Clonality: Polyclonal

Application: WB 1:500-1:2000, IHC 1:50-1:200
*The optimal dilutions should be determined by the end user.

Reactivity: Human, Mouse, Monkey

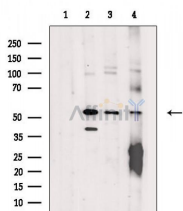
Storage: Rabbit IgG in phosphate buffered saline, pH 7.4, 150mM NaCl, 0.02% sodium azide and 50% glycerol. Store at -20 °C. Stable for 12 months from date of receipt.

Purification: The antiserum was purified by peptide affinity chromatography using SulfoLink™ Coupling Resin (Thermo Fisher Scientific).

Immunogen: A synthesized peptide derived from human ZNF71, corresponding to a region within N-terminal amino acids.

Uniprot: Q9NQZ8

Description: May be involved in transcriptional regulation.



Western blot analysis of extracts from various samples, using ZNF71 Ab.
Lane 1: VERO cells(H₂O₂ treatment), blocked with antigen-specific peptides,
Lane 2: VERO cells(H₂O₂ treatment),
Lane 3: Mouse spleen,
Lane 4: P19 cells(serum starvation treatment).

IMPORTANT: For western blot, incubate membrane with diluted primary Ab in 5% w/v milk, 1X TBS, 0.1% Tween@20 at 4°C with gentle shaking, overnight.

For Research Use Only. Not for use in diagnostic and therapeutic procedures. Not for resale without express authorization.