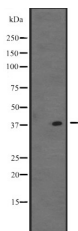


VSX1 Ab

[Images\(1\)](#)

Cat.#: DF2476	Concn.: ~1mg/ml	Mol.Wt.: 38 kDa
Size:	Source: Rabbit	Clonality: Polyclonal
Application:	WB 1:500-1:2000 *The optimal dilutions should be determined by the end user.	
Reactivity:	Human, Mouse	
Storage:	Rabbit IgG in phosphate buffered saline, pH 7.4, 150mM NaCl, 0.02% sodium azide and 50% glycerol. Store at -20 °C. Stable for 12 months from date of receipt.	
Purification:	The antiserum was purified by peptide affinity chromatography using SulfoLink™ Coupling Resin (Thermo Fisher Scientific).	
Immunogen:	A synthesized peptide derived from human VSX1, corresponding to a region within C-terminal amino acids.	
Uniprot:	Q9NZR4	
Description:	Binds to the 37-bp core of the locus control region (LCR) of the red/green visual pigment gene cluster. May regulate the activity of the LCR and the cone opsin genes at earlier stages of development.	



Western blot analysis of VSX1 expression in K562 cell lysates .

IMPORTANT: For western blot, incubate membrane with diluted primary Ab in 5% w/v milk , 1X TBS, 0.1% Tween@20 at 4°C with gentle shaking, overnight.

For Research Use Only. Not for use in diagnostic and therapeutic procedures. Not for resale without express authorization.