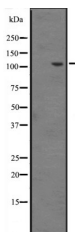


## INT6 Ab

[Images\(1\)](#)

|               |  |                       |
|---------------|--|-----------------------|
| Cat.#: DF2482 | Concn.: ~1mg/ml  | Mol.Wt.: 117 kDa      |
| Size:         | Source: Rabbit   | Clonality: Polyclonal |
| Application:  | WB 1:500-1:2000<br>*The optimal dilutions should be determined by the end user.  |                       |
| Reactivity:   | Human, Mouse   |                       |
| Storage:      | Rabbit IgG in phosphate buffered saline, pH 7.4, 150mM NaCl, 0.02% sodium azide and 50% glycerol. Store at -20 °C. Stable for 12 months from date of receipt.  |                       |
| Purification: | The antiserum was purified by peptide affinity chromatography using SulfoLink™ Coupling Resin (Thermo Fisher Scientific).  |                       |
| Immunogen:    | A synthesized peptide derived from human INT6, corresponding to a region within C-terminal amino acids.  |                       |
| Uniprot:      | Q9UL03   |                       |
| Description:  | Component of the Integrator complex, a complex involved in the small nuclear RNAs (snRNA) U1 and U2 transcription and in their 3'-box-dependent processing. The Integrator complex is associated with the C-terminal domain (CTD) of RNA polymerase II largest subunit (POLR2A) and is recruited to the U1 and U2 snRNAs genes. May have a tumor suppressor role; an ectopic expression suppressing tumor cell growth. |                       |



Western blot analysis of INT6 expression in HeLa cell lysates.

**IMPORTANT:** For western blot, incubate membrane with diluted primary Ab in 5% w/v milk, 1X TBS, 0.1% Tween@20 at 4°C with gentle shaking, overnight.

For Research Use Only. Not for use in diagnostic and therapeutic procedures. Not for resale without express authorization.