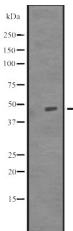


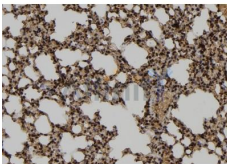
## TUBD1 Ab

[Images\(2\)](#)

Cat.#: DF2568	Concn.: ~1mg/ml	Mol.Wt.: 45 kDa
Size:	Source: Rabbit	Clonality: Polyclonal
Application:	WB 1:500-1:2000, IHC 1:50-1:200 *The optimal dilutions should be determined by the end user.	
Reactivity:	Human,Mouse	
Storage:	Rabbit IgG in phosphate buffered saline, pH 7.4, 150mM NaCl, 0.02% sodium azide and 50% glycerol. Store at -20 °C. Stable for 12 months from date of receipt.	
Purification:	The antiserum was purified by peptide affinity chromatography using SulfoLink™ Coupling Resin (Thermo Fisher Scientific).	
Immunogen:	A synthesized peptide derived from human TUBD1, corresponding to a region within the internal amino acids.	
Uniprot:	Q9UJT1	
Description:	In the elongating spermatid it is associated with the manchette, a specialized microtubule system present during reshaping of the sperm head.	



Western blot analysis of TUBD1 expression in Delta 1 Tubulin transfected 293T cell lysates.



DF2568 at 1/100 staining Mouse lung tissue by IHC-P. The sample was formaldehyde fixed and a heat mediated antigen retrieval step in citrate buffer was performed. The sample was then blocked and incubated with the Ab for 1.5 hours at 22°C. An HRP conjugated goat anti-rabbit Ab was used as the secondary Ab.

**IMPORTANT:** For western blot, incubate membrane with diluted primary Ab in 5% w/v milk, 1X TBS, 0.1% Tween@20 at 4°C with gentle shaking, overnight.



**Affinity Biosciences**  
website: [www.affbiotech.com](http://www.affbiotech.com)  
order: [order@affbiotech.com](mailto:order@affbiotech.com)

---

procedures. Not for resale without express authorization.