

## CRKL Ab

[Images\(1\)](#)

Cat.#: BF0089	Concn.: ~1mg/ml	Mol.Wt.: 39kDa
Size:	Source: Mouse	Clonality: Monoclonal

Application:	ELISA 1:10000, WB 1:500-1:2000, FCM 1:200-1:400 *The optimal dilutions should be determined by the end user.
Reactivity:	Human
Storage:	Mouse IgG1 in phosphate buffered saline (without Mg <sup>2+</sup> and Ca <sup>2+</sup> ), pH 7.4, 150mM NaCl, 0.02% sodium azide and 50% glycerol. Store at -20 °C. Stable for 12 months from date of receipt.
Purification:	Affinity-chromatography.
Immunogen:	Purified recombinant fragment of human CRKL expressed in E. Coli.
Uniprot:	P46109
Description:	This gene encodes a protein kinase containing SH2 and SH3 (src homology) domains which has been shown to activate the RAS and JUN kinase signaling pathways and transform fibroblasts in a RAS-dependent fashion. It is a substrate of the BCR-ABL tyrosine kinase, plays a role in fibroblast transformation by BCR-ABL, and may be oncogenic.

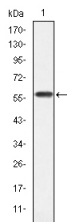


Figure 1: Western blot analysis using CRKL mAb against human CRKL (AA: 100-303) recombinant protein. (Expected MW is 60 kDa)

**IMPORTANT:** For western blot, incubate membrane with diluted primary Ab in 5% w/v milk, 1X TBS, 0.1% Tween@20 at 4°C with gentle shaking, overnight.

For Research Use Only. Not for use in diagnostic and therapeutic procedures. Not for resale without express authorization.