

CANT1 Ab

[Images\(3\)](#)

Cat.#: DF2590	Concn.: ~1mg/ml	Mol.Wt.: 45 kDa
Size:	Source: Rabbit	Clonality: Polyclonal

Application: WB 1:500-1:2000, IF/ICC 1:100-1:500
*The optimal dilutions should be determined by the end user.

Reactivity: Human, Mouse, Rat

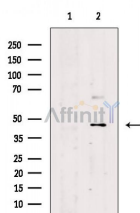
Storage: Rabbit IgG in phosphate buffered saline, pH 7.4, 150mM NaCl, 0.02% sodium azide and 50% glycerol. Store at -20 °C. Stable for 12 months from date of receipt.

Purification: The antiserum was purified by peptide affinity chromatography using SulfoLink™ Coupling Resin (Thermo Fisher Scientific).

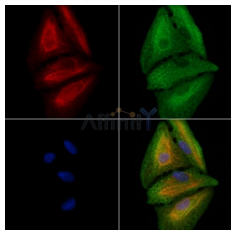
Immunogen: A synthesized peptide derived from human CANT1, corresponding to a region within the internal amino acids.

Uniprot: Q8WVQ1

Description: Calcium-dependent nucleotidase with a preference for UDP. The order of activity with different substrates is UDP > GDP > UTP > GTP. Has very low activity towards ADP and even lower activity towards ATP. Does not hydrolyze AMP and GMP.



Western blot analysis of extracts from Rat brain, using CANT1 Ab. The lane on the left was treated with blocking peptide.



DF2590 staining A549 cells by IF/ICC. The samples were fixed with PFA and permeabilized in 0.1% Triton X-100, then blocked in 10% serum for 45 minutes at 25°C. Samples were then incubated with primary Ab(DF2590) and mouse anti-beta tubulin Ab(T0023) for 1 hour at 37°C. An AlexaFluor594 conjugated goat anti-rabbit IgG(H+L) Ab(Red) and an AlexaFluor488 conjugated goat anti-mouse IgG(H+L) Ab(Green) were used as the secondary Ab.

The nuclear counter stain is DAPI (blue).

IMPORTANT: For western blot, incubate membrane with diluted primary Ab in 5% w/v milk, 1X TBS, 0.1% Tween@20 at 4°C with gentle shaking, overnight.



Affinity Biosciences

website: www.affbiotech.com

order: order@affbiotech.com

For Research Use Only. Not for use in diagnostic and therapeutic procedures. Not for resale without express authorization.