

GPR4 Ab

[References\(1\)](#) [Images\(2\)](#)

Cat.#: DF2744
Size:

Concn.: ~1mg/ml
Source: Rabbit

Mol.Wt.: 41 kDa
Clonality: Polyclonal

Application:

WB 1:500-1:2000, IF/ICC 1:200

*The optimal dilutions should be determined by the end user.

Reactivity:

Human,Mouse,Rat

Storage:

Rabbit IgG in phosphate buffered saline, pH 7.4, 150mM NaCl, 0.02% sodium azide and 50% glycerol. Store at -20 °C. Stable for 12 months from date of receipt.

Purification:

The antiserum was purified by peptide affinity chromatography using SulfoLink™ Coupling Resin (Thermo Fisher Scientific).

Immunogen:

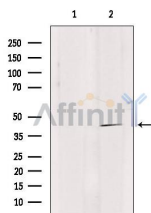
A synthesized peptide derived from human GPR4, corresponding to a region within the internal amino acids.

Uniprot:

P46093

Description:

Proton-sensing receptor coupled to several G-proteins, including G(s), G and G(q)/G proteins, leading to cAMP production.



Western blot analysis of extracts from HepG2, using GPR4 Ab. Lane 1 was treated with the blocking peptide.

IMPORTANT: For western blot, incubate membrane with diluted primary Ab in 5% w/v milk, 1X TBS, 0.1% Tween@20 at 4°C with gentle shaking, overnight.

For Research Use Only. Not for use in diagnostic and therapeutic procedures. Not for resale without express authorization.