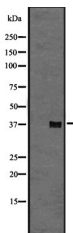


GPR6 Ab

[Images\(1\)](#)

| | | |
|---------------|---|-----------------------|
| Cat.#: DF2754 | Concn.: ~1mg/ml | Mol.Wt.: 38 kDa |
| Size: | Source: Rabbit | Clonality: Polyclonal |
| Application: | WB 1:500-1:2000 *The optimal dilutions should be determined by the end user. | |
| Reactivity: | Human, Mouse, Rat | |
| Storage: | Rabbit IgG in phosphate buffered saline, pH 7.4, 150mM NaCl, 0.02% sodium azide and 50% glycerol. Store at -20 °C. Stable for 12 months from date of receipt. | |
| Purification: | The antiserum was purified by peptide affinity chromatography using SulfoLink™ Coupling Resin (Thermo Fisher Scientific). | |
| Immunogen: | A synthesized peptide derived from human GPR6, corresponding to a region within the internal amino acids. | |
| Uniprot: | P46095 | |
| Description: | Orphan receptor with constitutive G(s) signaling activity that activate cyclic AMP. Promotes neurite outgrowth and blocks myelin inhibition in neurons | |



Western blot analysis of GPR6 expression in A431 whole cell lysates .

IMPORTANT: For western blot, incubate membrane with diluted primary Ab in 5% w/v milk , 1X TBS, 0.1% Tween@20 at 4°C with gentle shaking, overnight.

For Research Use Only. Not for use in diagnostic and therapeutic procedures. Not for resale without express authorization.