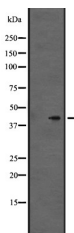


GPR86/GPR94 Ab

[Images\(1\)](#)

Cat.#: DF2770	Concn.: ~1mg/ml	Mol.Wt.: 41 kDa
Size:	Source: Rabbit	Clonality: Polyclonal

Application:	WB 1:500-1:2000, IHC 1:50-1:200 *The optimal dilutions should be determined by the end user.
Reactivity:	Human
Storage:	Rabbit IgG in phosphate buffered saline, pH 7.4, 150mM NaCl, 0.02% sodium azide and 50% glycerol. Store at -20 °C. Stable for 12 months from date of receipt.
Purification:	The antiserum was purified by peptide affinity chromatography using SulfoLink™ Coupling Resin (Thermo Fisher Scientific).
Immunogen:	A synthesized peptide derived from human GPR86/GPR94, corresponding to a region within C-terminal amino acids.
Uniprot:	Q9BPV8
Description:	Receptor for ADP. Coupled to G(i)-proteins. May play a role in hematopoiesis and the immune system.



Western blot analysis of GPR86/GPR94 expression in HeLa cell lysates.

IMPORTANT: For western blot, incubate membrane with diluted primary Ab in 5% w/v milk, 1X TBS, 0.1% Tween@20 at 4°C with gentle shaking, overnight.

For Research Use Only. Not for use in diagnostic and therapeutic procedures. Not for resale without express authorization.