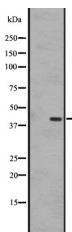


EBI2 Ab

[Images\(1\)](#)

Cat.#: DF2776	Concn.: ~1mg/ml	Mol.Wt.: 40,60kD
Size:	Source: Rabbit	Clonality: Polyclonal
Application:	WB 1:500-1:2000, IHC 1:50-1:200 *The optimal dilutions should be determined by the end user.	
Reactivity:	Human,Mouse	
Storage:	Rabbit IgG in phosphate buffered saline, pH 7.4, 150mM NaCl, 0.02% sodium azide and 50% glycerol. Store at -20 °C. Stable for 12 months from date of receipt.	
Purification:	The antiserum was purified by peptide affinity chromatography using SulfoLink™ Coupling Resin (Thermo Fisher Scientific).	
Immunogen:	A synthesized peptide derived from human EBI2, corresponding to a region within the internal amino acids.	
Uniprot:	P32249	
Description:	Orphan receptor that plays a central role during humoral immunity. Promotes activated B-cell localization in the outer follicle and interfollicular regions. Its specific expression during B-cell maturation helps position B-cells appropriately for mounting T-dependent antibody responses (By similarity). Signals constitutively through G(i)-alpha, but not G(s)-alpha or G(q)-alpha	



Western blot analysis of EBI2 expression in A431 whole cell lysates .

IMPORTANT: For western blot, incubate membrane with diluted primary Ab in 5% w/v milk , 1X TBS, 0.1% Tween@20 at 4°C with gentle shaking, overnight.

For Research Use Only. Not for use in diagnostic and therapeutic procedures. Not for resale without express authorization.