

CCKBR Ab

[References\(1\)](#) [Images\(2\)](#)

Cat.#: DF2793
Size:

Concn.: ~1mg/ml
Source: Rabbit

Mol.Wt.: 48 kDa;
Clonality: Polyclonal

Application:

WB 1:500-1:2000, IHC 1:50-1:200, IF/ICC 1:100-1:500

*The optimal dilutions should be determined by the end user.

Reactivity:

Human

Storage:

Rabbit IgG in phosphate buffered saline, pH 7.4, 150mM NaCl, 0.02% sodium azide and 50% glycerol. Store at -20 °C. Stable for 12 months from date of receipt.

Purification:

The antiserum was purified by peptide affinity chromatography using SulfoLink™ Coupling Resin (Thermo Fisher Scientific).

Immunogen:

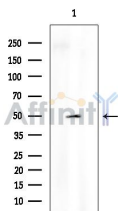
A synthesized peptide derived from human CCKBR, corresponding to a region within N-terminal amino acids.

Uniprot:

P32239

Description:

Receptor for gastrin and cholecystokinin. The CKK-B receptors occur throughout the central nervous system where they modulate anxiety, analgesia, arousal, and neuroleptic activity. This receptor mediates its action by association with G proteins that activate a phosphatidylinositol-calcium second messenger system. Isoform 2 is constitutively activated and may regulate cancer cell proliferation via a gastrin-independent mechanism.



Western blot analysis of extracts from EC304 cells(heat-shock treatment), using CCKBR Ab at 1/1000 dilution.
Observed bands:50kD.

IMPORTANT: For western blot, incubate membrane with diluted primary Ab in 5% w/v milk , 1X TBS, 0.1% Tween@20 at 4°C with gentle shaking, overnight.

For Research Use Only. Not for use in diagnostic and therapeutic procedures. Not for resale without express authorization.