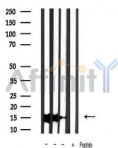


Cytochrome C Ab

[References\(48\)](#) [Images\(52\)](#)

Cat.#: AF0146	Concn.: ~1mg/ml	Mol.Wt.: 15kDa
Size:	Source: Rabbit	Clonality: Polyclonal
Application:	WB 1:500-1:3000, IHC 1:50-1:200, IF/ICC 1:100-1:500 *The optimal dilutions should be determined by the end user.	
Reactivity:	Human,Mouse,Rat,Monkey	
Storage:	Rabbit IgG in phosphate buffered saline , pH 7.4, 150mM NaCl, 0.02% sodium azide and 50% glycerol. Store at -20 °C. Stable for 12 months from date of receipt.	
Purification:	The antiserum was purified by peptide affinity chromatography using SulfoLink™ Coupling Resin (Thermo Fisher Scientific).	
Immunogen:	A synthesized peptide derived from human Cytochrome C, corresponding to a region within N-terminal amino acids.	
Uniprot:	P99999	
Description:	CYCS Electron carrier protein. The oxidized form of the cytochrome c heme group can accept an electron from the heme group of the cytochrome c1 subunit of cytochrome reductase. Cytochrome c then transfers this electron to the cytochrome oxidase complex, the final protein carrier in the mitochondrial electron-transport chain. Belongs to the cytochrome c family.	



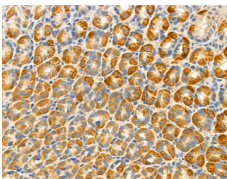
Western blot analysis of extracts from various samples, using Cytochrome c Ab.

Lane 1: Mouse brain lysates;

Lane 2: Mouse liver lysates;

Lane 3: Mouse muscle lysates;

Lane 4: Mouse muscle lysates treated with blocking peptide;



AF0146 at 1/100 staining Rat stomach tissue by IHC-P. The sample was formaldehyde fixed and a heat mediated antigen retrieval step in citrate buffer was performed. The sample was then blocked and incubated with the primary Ab at 4°C overnight. An HRP conjugated anti-Rabbit Ab was used as the secondary Ab.

IMPORTANT: For western blot, incubate membrane with diluted primary Ab in 5% w/v milk , 1X TBS, 0.1% Tween@20 at 4°C with gentle shaking,

overnight.

For Research Use Only. Not for use in diagnostic and therapeutic procedures. Not for resale without express authorization.