

ROCK1 Ab

[Images\(1\)](#)

Cat.#: BF0306	Concn.: ~1mg/ml	Mol.Wt.: 158kDa
Size:	Source: Mouse	Clonality: Monoclonal

Application:	ELISA 1:10000, WB 1:500-1:2000 *The optimal dilutions should be determined by the end user.
Reactivity:	Human
Storage:	Mouse IgG1 in phosphate buffered saline (without Mg ²⁺ and Ca ²⁺), pH 7.4, 150mM NaCl, 0.02% sodium azide and 50% glycerol. Store at -20 °C. Stable for 12 months from date of receipt.
Purification:	Affinity-chromatography.
Immunogen:	Purified recombinant fragment of human ROCK1 expressed in E. Coli.
Uniprot:	Q13464
Description:	This gene encodes a protein serine/threonine kinase that is activated when bound to the GTP-bound form of Rho. The small GTPase Rho regulates formation of focal adhesions and stress fibers of fibroblasts, as well as adhesion and aggregation of platelets and lymphocytes by shuttling between the inactive GDP-bound form and the active GTP-bound form. Rho is also essential in cytokinesis and plays a role in transcriptional activation by serum response factor. This protein, a downstream effector of Rho, phosphorylates and activates LIM kinase, which in turn, phosphorylates cofilin, inhibiting its actin-depolymerizing activity.

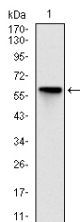


Figure 1: Western blot analysis using ROCK1 mAb against human ROCK1 (AA: 403-610) recombinant protein. (Expected MW is 158 kDa)

IMPORTANT: For western blot, incubate membrane with diluted primary Ab in 5% w/v milk, 1X TBS, 0.1% Tween@20 at 4°C with gentle shaking, overnight.

For Research Use Only. Not for use in diagnostic and therapeutic procedures. Not for resale without express authorization.