

ITGB1 Ab

[References\(1\)](#) [Images\(4\)](#)

Cat.#: BF0336	Concn.: ~1mg/ml	Mol.Wt.: 88.4kDa
Size:	Source: Mouse	Clonality: Monoclonal

Application: ELISA 1:10000, WB 1:500-1:2000, IHC 1:200-1:1000, FCM 1:200-1:400
*The optimal dilutions should be determined by the end user.

Reactivity: Human,Mouse

Storage: Mouse IgG1 in phosphate buffered saline (without Mg²⁺ and Ca²⁺), pH 7.4, 150mM NaCl, 0.02% sodium azide and 50% glycerol. Store at -20 °C. Stable for 12 months from date of receipt.

Purification: Affinity-chromatography.

Immunogen: Purified recombinant fragment of human ITGB1 expressed in E. Coli.

Uniprot: P05556

Description: Integrins are heterodimeric proteins made up of alpha and beta subunits. At least 18 alpha and 8 beta subunits have been described in mammals. Integrin family members are membrane receptors involved in cell adhesion and recognition in a variety of processes including embryogenesis, hemostasis, tissue repair, immune response and metastatic diffusion of tumor cells. The protein encoded by this gene is a beta subunit. Six alternatively spliced variants have been found for this gene which encode five proteins with alternate carboxy termini.

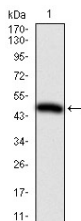


Figure 1: Western blot analysis using ITGB1 mAb against human ITGB1 (AA: 50-270) recombinant protein. (Expected MW is 50.6 kDa)

IMPORTANT: For western blot, incubate membrane with diluted primary Ab in 5% w/v milk , 1X TBS, 0.1% Tween@20 at 4°C with gentle shaking, overnight.

For Research Use Only. Not for use in diagnostic and therapeutic procedures. Not for resale without express authorization.