

RPA1 Ab

[Images\(1\)](#)

Cat.#: BF0367	Concn.: ~1mg/ml	Mol.Wt.: 68.1kDa
Size:	Source: Mouse	Clonality: Monoclonal
Application:	ELISA 1:10000, WB 1:500-1:2000, IHC 1:200-1:1000, IF/ICC 1:200-1:1000, FCM 1:200-1:400 *The optimal dilutions should be determined by the end user.	
Reactivity:	Human, Monkey	
Storage:	Mouse IgG1 in phosphate buffered saline (without Mg ²⁺ and Ca ²⁺), pH 7.4, 150mM NaCl, 0.02% sodium azide and 50% glycerol. Store at -20 °C. Stable for 12 months from date of receipt.	
Purification:	Affinity-chromatography.	
Immunogen:	Purified recombinant fragment of human RPA1 expressed in E. Coli.	
Uniprot:	O95602	
Description:	This gene Plays an essential role in several cellular processes in DNA metabolism including replication, recombination and DNA repair. Binds and subsequently stabilizes single-stranded DNA intermediates and thus prevents complementary DNA from reannealing	

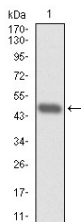


Figure 1: Western blot analysis using RPA1 mAb against human RPA1 (AA: 308-513) recombinant protein. (Expected MW is 48.3 kDa)

IMPORTANT: For western blot, incubate membrane with diluted primary Ab in 5% w/v milk, 1X TBS, 0.1% Tween@20 at 4°C with gentle shaking, overnight.

For Research Use Only. Not for use in diagnostic and therapeutic procedures. Not for resale without express authorization.