

## GAB1 Ab

[Images\(1\)](#)

Cat.#: BF0335	Concn.: ~1mg/ml	Mol.Wt.: 76.6kDa
Size:	Source: Mouse	Clonality: Monoclonal
Application:	ELISA 1:10000, WB 1:500-1:2000, IHC 1:200-1:1000, FCM 1:200-1:400 *The optimal dilutions should be determined by the end user.	
Reactivity:	Human,Mouse	
Storage:	Mouse IgG1 in phosphate buffered saline (without Mg <sup>2+</sup> and Ca <sup>2+</sup> ), pH 7.4, 150mM NaCl, 0.02% sodium azide and 50% glycerol. Store at -20 °C. Stable for 12 months from date of receipt.	
Purification:	Affinity-chromatography.	
Immunogen:	Purified recombinant fragment of human GAB1 expressed in E. Coli.	
Uniprot:	Q13480	
Description:	Grb2-associated binding protein 1 is a member of the IRS-1-like multisubstrate docking protein family. Contains an N-terminal pleckstrin homology (PH) domain and several proline-rich SH3 domain-binding sequences. Mediates branching tubulogenesis and plays a central role in cellular growth response, transformation and apoptosis.	

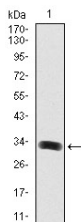


Figure 1: Western blot analysis using GAB1 mAb against human GAB1 (AA: 661-724) recombinant protein. (Expected MW is 32.4 kDa)

**IMPORTANT:** For western blot, incubate membrane with diluted primary Ab in 5% w/v milk , 1X TBS, 0.1% Tween@20 at 4°C with gentle shaking, overnight.

For Research Use Only. Not for use in diagnostic and therapeutic procedures. Not for resale without express authorization.