

CD5 Ab

[Images\(1\)](#)

| | | |
|---------------|-----------------|-----------------------|
| Cat.#: BF0031 | Concn.: ~1mg/ml | Mol.Wt.: 54.6kDa |
| Size: | Source: Mouse | Clonality: Monoclonal |

| | |
|---------------|---|
| Application: | ELISA 1:10000, WB 1:500-1:2000, FCM 1:200-1:400 *The optimal dilutions should be determined by the end user. |
| Reactivity: | Human |
| Storage: | Mouse IgG1 in phosphate buffered saline (without Mg ²⁺ and Ca ²⁺), pH 7.4, 150mM NaCl, 0.02% sodium azide and 50% glycerol. Store at -20 °C. Stable for 12 months from date of receipt. |
| Purification: | Affinity-chromatography. |
| Immunogen: | Purified recombinant fragment of human CD5 expressed in E. Coli. |
| Uniprot: | P06127 |
| Description: | The human cd5 gene has two alternative exons 1: exon 1A (E1A) which encodes the full-length (FL) CD5 protein and exon 1B (E1B) which encodes a truncated (TR) isoform. The FL variant of CD5 protein is translocated to the plasma membrane, while its TR variant is retained in the cytoplasm. |

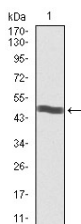


Figure 1: Western blot analysis using CD5 mAb against human CD5 recombinant protein. (Expected MW is 48.3 kDa)

IMPORTANT: For western blot, incubate membrane with diluted primary Ab in 5% w/v milk, 1X TBS, 0.1% Tween@20 at 4°C with gentle shaking, overnight.

For Research Use Only. Not for use in diagnostic and therapeutic procedures. Not for resale without express authorization.