

## ANXA1 Ab

[Images\(1\)](#)

Cat.#: BF0046	Concn.: ~1mg/ml	Mol.Wt.: 38.7kDa
Size:	Source: Mouse	Clonality: Monoclonal

**Application:** ELISA 1:10000, WB 1:500-1:2000, IHC 1:200-1:1000  
\*The optimal dilutions should be determined by the end user.

**Reactivity:** Human,Mouse,Monkey

**Storage:** Mouse IgG1 in phosphate buffered saline (without Mg<sup>2+</sup> and Ca<sup>2+</sup>), pH 7.4, 150mM NaCl, 0.02% sodium azide and 50% glycerol. Store at -20 °C. Stable for 12 months from date of receipt.

**Purification:** Affinity-chromatography.

**Immunogen:** Purified recombinant fragment of human ANXA1 expressed in E. Coli.

**Uniprot:** P04083

**Description:** Annexin I belongs to a family of Ca(2+)-dependent phospholipid binding proteins which have a molecular weight of approximately 35,000 to 40,000 and are preferentially located on the cytosolic face of the plasma membrane. Annexin I protein has an apparent relative molecular mass of 40 kDa, with phospholipase A2 inhibitory activity.

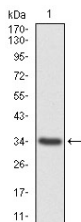


Figure 1: Western blot analysis using ANXA1 mAb against human ANXA1 recombinant protein. (Expected MW is 33.7 kDa)

**IMPORTANT:** For western blot, incubate membrane with diluted primary Ab in 5% w/v milk , 1X TBS, 0.1% Tween@20 at 4°C with gentle shaking, overnight.

For Research Use Only. Not for use in diagnostic and therapeutic procedures. Not for resale without express authorization.