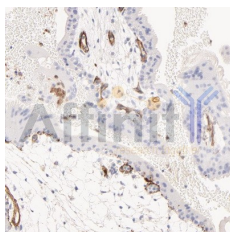


CD31 Ab

[References\(6\)](#) [Images\(6\)](#)

| | | |
|---------------|--|-----------------------|
| Cat.#: AF0077 | Concn.: ~1mg/ml | Mol.Wt.: 82kDa |
| Size: | Source: Rabbit | Clonality: Polyclonal |
| Application: | WB 1:500-1:3000, IHC 1:50-1:200, IF/ICC: 1:100-1:500 *The optimal dilutions should be determined by the end user. | |
| Reactivity: | Human | |
| Storage: | Rabbit IgG in phosphate buffered saline , pH 7.4, 150mM NaCl, 0.02% sodium azide and 50% glycerol. Store at -20 °C. Stable for 12 months from date of receipt. | |
| Purification: | The antiserum was purified by peptide affinity chromatography using SulfoLink™ Coupling Resin (Thermo Fisher Scientific). | |
| Immunogen: | A synthesized peptide derived from human CD31, corresponding to a region within C-terminal amino acids. | |
| Uniprot: | P16284 | |
| Description: | PECAM-1 a cell adhesion molecule expressed on platelets and at endothelial cell intercellular junctions. Plays a role in modulation of integrin-mediated cell adhesion, transendothelial migration, angiogenesis, apoptosis, cell migration, negative regulation of immune cell signaling, autoimmunity, macrophage phagocytosis, IgE-mediated anaphylaxis and thrombosis. Undergoes alternative splicing, generating multiple isoforms in vascular beds of various tissues. | |



This image is a courtesy of anonymous review.

IMPORTANT: For western blot, incubate membrane with diluted primary Ab in 5% w/v milk , 1X TBS, 0.1% Tween@20 at 4°C with gentle shaking, overnight.

For Research Use Only. Not for use in diagnostic and therapeutic procedures. Not for resale without express authorization.