

human Splunc2 Ab

[Images\(1\)](#)

Cat.#: BF0019	Concn.: ~1mg/ml	Mol.Wt.: 27kDa
Size:	Source: Mouse	Clonality: Monoclonal

Application:	ELISA 1:10000, WB 1:500-1:2000, FCM 1:200-1:400 *The optimal dilutions should be determined by the end user.
Reactivity:	Human
Storage:	Mouse IgG1 in phosphate buffered saline (without Mg ²⁺ and Ca ²⁺), pH 7.4, 150mM NaCl, 0.02% sodium azide and 50% glycerol. Store at -20 °C. Stable for 12 months from date of receipt.
Purification:	Affinity-chromatography.
Immunogen:	Purified recombinant fragment of human human Splunc2 expressed in E. Coli.
Uniprot:	Q96DR5
Description:	SPLUNC2 is one member of PLUNC family, the gene undergoes alternative splicing using two 5' non-coding exons, suggesting that the gene is regulated by alternative promoters. multiple SPLUNC2 isoforms are found in the oral cavity and suggest that these proteins may be differentially regulated in distinct tissues where they may function in the innate immune response. Mucin plugs, mucous and intermediate cells of mucoepidermoid carcinomas were positive for LPLUNC1 and SPLUNC2, but areas composed of epidermoid and clear cells were negative for all PLUNCs.

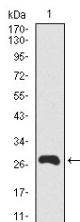


Figure 1: Western blot analysis using Splunc2 mAb against human Splunc2 recombinant protein. (Expected MW is 27.6 kDa)

IMPORTANT: For western blot, incubate membrane with diluted primary Ab in 5% w/v milk, 1X TBS, 0.1% Tween@20 at 4°C with gentle shaking, overnight.

For Research Use Only. Not for use in diagnostic and therapeutic procedures. Not for resale without express authorization.