

## SFTPC Ab

[Images\(1\)](#)

|               |                 |                       |
|---------------|-----------------|-----------------------|
| Cat.#: BF0004 | Concn.: ~1mg/ml | Mol.Wt.: 21kDa        |
| Size:         | Source: Mouse   | Clonality: Monoclonal |

|               |  |
|---------------|--|
| Application:  | ELISA 1:10000, WB 1:500-1:2000<br>*The optimal dilutions should be determined by the end user.   |
| Reactivity:   | Human  |
| Storage:      | Mouse IgG1 in phosphate buffered saline (without Mg <sup>2+</sup> and Ca <sup>2+</sup> ), pH 7.4, 150mM NaCl, 0.02% sodium azide and 50% glycerol. Store at -20 °C. Stable for 12 months from date of receipt.   |
| Purification: | Affinity-chromatography.   |
| Immunogen:    | Purified recombinant fragment of human SFTPC expressed in E. Coli.   |
| Uniprot:      | P11686   |
| Description:  | This gene encodes the pulmonary-associated surfactant protein C (SPC), an extremely hydrophobic surfactant protein essential for lung function and homeostasis after birth. Pulmonary surfactant is a surface-active lipoprotein complex composed of 90% lipids and 10% proteins which include plasma proteins and apolipoproteins SPA, SPB, SPC and SPD. The surfactant is secreted by the alveolar cells of the lung and maintains the stability of pulmonary tissue by reducing the surface tension of fluids that coat the lung. |

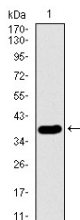


Figure 1: Western blot analysis using SFTPC mAb against human SFTPC recombinant protein. (Expected MW is 38.4 kDa)

**IMPORTANT:** For western blot, incubate membrane with diluted primary Ab in 5% w/v milk, 1X TBS, 0.1% Tween@20 at 4°C with gentle shaking, overnight.

For Research Use Only. Not for use in diagnostic and therapeutic procedures. Not for resale without express authorization.