

## p95/NBS1 Ab

[Images\(1\)](#)

Cat.#: AF0828	Concn.: ~1mg/ml	Mol.Wt.: 85kDa
Size:	Source: Rabbit	Clonality: Polyclonal

Application: WB 1:500-1:2000, IF/ICC 1:100-1:500

\*The optimal dilutions should be determined by the end user.

Reactivity: Human

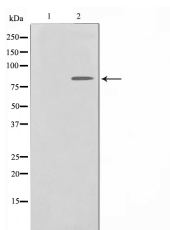
Storage: Rabbit IgG in phosphate buffered saline , pH 7.4, 150mM NaCl, 0.02% sodium azide and 50% glycerol. Store at -20 °C. Stable for 12 months from date of receipt.

Purification: The antiserum was purified by peptide affinity chromatography using SulfoLink™ Coupling Resin (Thermo Fisher Scientific).

Immunogen: A synthesized peptide derived from human p95/NBS1, corresponding to a region within the internal amino acids.

Uniprot: O60934

Description: NBS1 is a member of the MRE11/RAD50 double-strand break repair complex. Involved in DNA double-strand break repair and DNA damage-induced checkpoint activation. Mutation results in the Nijmegen breakage syndrome (NBS), an autosomal recessive chromosomal instability syndrome.



Western blot analysis on HuvEc cell lysates using Nibrin Ab, The lane on the left was treated with the antigen-specific peptide.

**IMPORTANT:** For western blot, incubate membrane with diluted primary Ab in 5% w/v milk , 1X TBS, 0.1% Tween@20 at 4°C with gentle shaking, overnight.

For Research Use Only. Not for use in diagnostic and therapeutic procedures. Not for resale without express authorization.