

AKT1 Ab

[References\(4\)](#) [Images\(5\)](#)

Cat.#: AF0836	Concn.: ~1mg/ml	Mol.Wt.: 55kDa
Size:	Source: Rabbit	Clonality: Polyclonal

Application: WB 1:500-1:2000, IF/ICC 1:100-1:500

*The optimal dilutions should be determined by the end user.

Reactivity: Human, Mouse, Rat

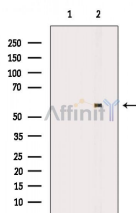
Storage: Rabbit IgG in phosphate buffered saline, pH 7.4, 150mM NaCl, 0.02% sodium azide and 50% glycerol. Store at -20 °C. Stable for 12 months from date of receipt.

Purification: The antiserum was purified by peptide affinity chromatography using SulfoLink™ Coupling Resin (Thermo Fisher Scientific).

Immunogen: A synthesized peptide derived from human AKT1, corresponding to a region within C-terminal amino acids.

Uniprot: P31749

Description: an AGC kinase that plays a critical role in controlling the balance between survival and AP0ptosis. Phosphorylated and activated by PDK1 in the PI3 kinase pathway. Mediates survival signals downstream of PI3 kinase and several growth factor receptors by phosphorylating AP0ptotic proteins. First found in a mouse transforming retrovirus. Tumorigenic in a mouse lymphoma model and activated (by phospho-Akt staining) and/or overexpressed in a number of cancers including breast, prostate, lung, pancreatic, liver, ovarian and colorectal. Inhibitor: RX-0201. Substrates include tuberin, Bad, Forkhead transcription factors, caspase-9, and glycogen synthase kinase-3.



Western blot analysis of extracts from 293 cells, using AKT1 Ab. The lane on the left was treated with blocking peptide.

IMPORTANT: For western blot, incubate membrane with diluted primary Ab in 5% w/v milk, 1X TBS, 0.1% Tween@20 at 4°C with gentle shaking, overnight.

For Research Use Only. Not for use in diagnostic and therapeutic procedures. Not for resale without express authorization.