

DDIT3/CHOP Ab

[Images\(3\)](#)

Cat.#: AF0629	Concn.: ~1mg/ml	Mol.Wt.: 19~30kD
Size:	Source: Rabbit	Clonality: Polyclonal

Application: WB 1:500-1:2000, IHC 1:50-1:200, IF/ICC 1:100-1:500
*The optimal dilutions should be determined by the end user.

Reactivity: Human, Mouse, Rat

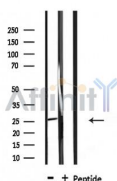
Storage: Rabbit IgG in phosphate buffered saline, pH 7.4, 150mM NaCl, 0.02% sodium azide and 50% glycerol. Store at -20 °C. Stable for 12 months from date of receipt.

Purification: The antiserum was purified by peptide affinity chromatography using SulfoLink™ Coupling Resin (Thermo Fisher Scientific).

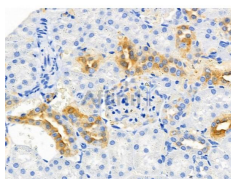
Immunogen: A synthesized peptide derived from human GADD153, corresponding to a region within N-terminal amino acids.

Uniprot: P35638

Description: CHOP a transcriptional-regulatory protein of the bZIP family. Inhibits the DNA-binding activity of C/EBP and LAP by forming heterodimers that cannot bind DNA. May play an important role in melanoma progression. CK2-mediated phosphorylation inhibits its transcriptional activity. Up-regulates IL-6 transcription by trapping negative regulating NF-IL6 isoform.



Western blot analysis of extracts from mouse brain, using GADD153 Ab.



AF0629 at 1/100 staining Rat kidney tissue by IHC-P. The sample was formaldehyde fixed and a heat mediated antigen retrieval step in citrate buffer was performed. The sample was then blocked and incubated with the primary Ab at 4°C overnight. An HRP conjugated anti-Rabbit Ab was used as the secondary Ab.

IMPORTANT: For western blot, incubate membrane with diluted primary Ab in 5% w/v milk, 1X TBS, 0.1% Tween@20 at 4°C with gentle shaking,

overnight.

For Research Use Only. Not for use in diagnostic and therapeutic procedures. Not for resale without express authorization.