

SENP6 Ab

[References\(2\)](#) [Images\(4\)](#)

Cat.#: AF0277	Concn.: ~1mg/ml	Mol.Wt.: 126kDa
Size:	Source: Rabbit	Clonality: Polyclonal

Application: IHC 1:50-1:200, WB 1:500-1:2000
*The optimal dilutions should be determined by the end user.

Reactivity: Human, Mouse

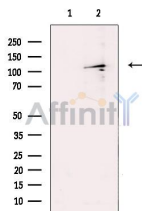
Storage: Rabbit IgG in phosphate buffered saline , pH 7.4, 150mM NaCl, 0.02% sodium azide and 50% glycerol. Store at -20 °C. Stable for 12 months from date of receipt.

Purification: The antiserum was purified by peptide affinity chromatography using SulfoLink™ Coupling Resin (Thermo Fisher Scientific).

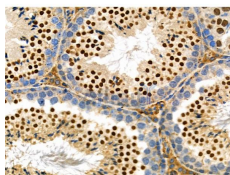
Immunogen: A synthesized peptide derived from human SENP6, corresponding to a region within the internal amino acids.

Uniprot: Q9GZR1

Description: SENP6 Protease that deconjugates SUMO1, SUMO2 and SUMO3 from targeted proteins. Does not seem to be involved in the processing of full-length SUMO proteins to their mature forms. Deconjugates SUMO1 from RXRA, leading to transcriptional activation. May act preferentially on substrates containing 3 or more SUMO2 or SUMO3 moieties. Belongs to the peptidase C48 family.



Western blot analysis of extracts from HL60, using SENP6 Ab. The lane on the left was treated with blocking peptide.



AF0277 at 1/100 staining Mouse testis tissue by IHC-P. The sample was formaldehyde fixed and a heat mediated antigen retrieval step in citrate buffer was performed. The sample was then blocked and incubated with the primary Ab at 4°C overnight. An HRP conjugated anti-Rabbit Ab was used as the secondary Ab.

in 5% w/v milk , 1X TBS, 0.1% Tween@20 at 4°C with gentle shaking,
overnight.

For Research Use Only. Not for use in diagnostic and therapeutic
procedures. Not for resale without express authorization.