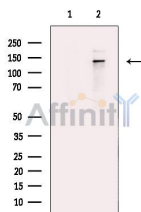


## HAIR Ab

[Images\(1\)](#)

Cat.#: AF0331	Concn.: ~1mg/ml	Mol.Wt.: 130kDa
Size:	Source: Rabbit	Clonality: Polyclonal
Application:	IHC 1:50-1:200, IF/ICC 1:100-1:500, WB 1:500-1:2000 *The optimal dilutions should be determined by the end user.	
Reactivity:	Human,Mouse	
Storage:	Rabbit IgG in phosphate buffered saline , pH 7.4, 150mM NaCl, 0.02% sodium azide and 50% glycerol. Store at -20 °C. Stable for 12 months from date of receipt.	
Purification:	The antiserum was purified by peptide affinity chromatography using SulfoLink™ Coupling Resin (Thermo Fisher Scientific).	
Immunogen:	A synthesized peptide derived from human HAIR, corresponding to a region within C-terminal amino acids.	
Uniprot:	O43593	
Description:	HR May act as a transcription factor that could act on to regulate one of the phases of hair growth. 2 isoforms of the human protein are produced by alternative splicing. Note: This description may include information from UniProtKB	



Western blot analysis of extracts from Hela cells, using HAIR Ab. The lane on the left was treated with blocking peptide.

**IMPORTANT:** For western blot, incubate membrane with diluted primary Ab in 5% w/v milk , 1X TBS, 0.1% Tween@20 at 4°C with gentle shaking, overnight.

For Research Use Only. Not for use in diagnostic and therapeutic procedures. Not for resale without express authorization.