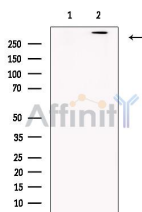


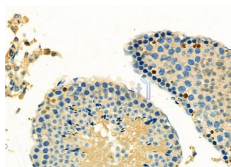
REV3L Ab

[Images\(3\)](#)

Cat.#: AF0342	Concn.: ~1mg/ml	Mol.Wt.: 352kDa
Size:	Source: Rabbit	Clonality: Polyclonal
Application:	IHC 1:50-1:200, WB 1:500-1:2000 *The optimal dilutions should be determined by the end user.	
Reactivity:	Human, Mouse	
Storage:	Rabbit IgG in phosphate buffered saline , pH 7.4, 150mM NaCl, 0.02% sodium azide and 50% glycerol. Store at -20 °C. Stable for 12 months from date of receipt.	
Purification:	The antiserum was purified by peptide affinity chromatography using SulfoLink™ Coupling Resin (Thermo Fisher Scientific).	
Immunogen:	A synthesized peptide derived from human REV3L, corresponding to a region within N-terminal amino acids.	
Uniprot:	O60673	
Description:	REV3 is the DNA polymerase zeta catalytic subunit. Catalyzes the production of N diphosphate + {DNA}N from N deoxynucleoside triphosphate. Involved in translesion synthesis and required for the production of UV- and other DNA fork-blocking-induced mutations, as well as the majority of spontaneous mutations.	



Western blot analysis of extracts from Human brain, using REV3L Ab. The lane on the left was treated with blocking peptide.



AF0342 at 1/100 staining Mouse testis tissue by IHC-P. The sample was formaldehyde fixed and a heat mediated antigen retrieval step in citrate buffer was performed. The sample was then blocked and incubated with the primary Ab at 4°C overnight. An HRP conjugated anti-Rabbit Ab was used as the secondary Ab.

IMPORTANT: For western blot, incubate membrane with diluted primary Ab in 5% w/v milk , 1X TBS, 0.1% Tween@20 at 4°C with gentle shaking,

overnight.

For Research Use Only. Not for use in diagnostic and therapeutic procedures. Not for resale without express authorization.