

TACC1 Ab

[Images\(2\)](#)

Cat.#: AF0456	Concn.: ~1mg/ml	Mol.Wt.: 87kDa
Size:	Source: Rabbit	Clonality: Polyclonal

Application: WB 1:500-1:2000, IF/ICC 1:100-1:500

*The optimal dilutions should be determined by the end user.

Reactivity: Human,Mouse

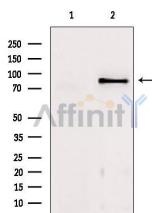
Storage: Rabbit IgG in phosphate buffered saline , pH 7.4, 150mM NaCl, 0.02% sodium azide and 50% glycerol. Store at -20 °C. Stable for 12 months from date of receipt.

Purification: The antiserum was purified by peptide affinity chromatography using SulfoLink™ Coupling Resin (Thermo Fisher Scientific).

Immunogen: A synthesized peptide derived from human TACC1, corresponding to a region within N-terminal amino acids.

Uniprot: O75410

Description: Likely involved in the processes that promote cell division prior to the formation of differentiated tissues. Interacts with KIAA0097/CH-TOG and with the oncogenic transcription factor YEATS4. Interacts with the Aurora kinases A and B (STK6 and AURKB). Interacts with LSM7, TDRD7 and SNRPG. Interacts with GCN5L2 and PCAF. 8 isoforms of the human protein are produced by alternative splicing. Protein Type: Unknown function



Western blot analysis of extracts from mouse brain, using TACC1 Ab. Lane 1 was treated with the blocking peptide.



AF0456 staining HeLa by IF/ICC. The sample were fixed with PFA and permeabilized in 0.1% Triton X-100, then blocked in 10% serum for 45 minutes at 25°C. The primary Ab was diluted at 1/200 and incubated with the sample for 1 hour at 37°C. An Alexa Fluor 594 conjugated goat anti-rabbit IgG (H+L) Ab, diluted at 1/600, was used as the secondary Ab.

IMPORTANT: For western blot, incubate membrane with diluted primary Ab

in 5% w/v milk , 1X TBS, 0.1% Tween@20 at 4°C with gentle shaking,
overnight.

For Research Use Only. Not for use in diagnostic and therapeutic
procedures. Not for resale without express authorization.