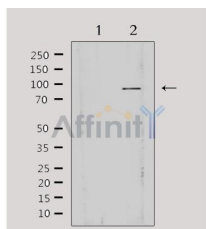


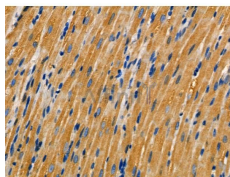
AKAP3 Ab

[Images\(5\)](#)

| | | |
|---------------|--|-----------------------|
| Cat.#: AF0529 | Concn.: ~1mg/ml | Mol.Wt.: 94kDa |
| Size: | Source: Rabbit | Clonality: Polyclonal |
| Application: | IF/ICC 1:100-1:500, WB 1:500-1:2000, IHC 1:50-1:200 *The optimal dilutions should be determined by the end user. | |
| Reactivity: | Human,Mouse,Rat | |
| Storage: | Rabbit IgG in phosphate buffered saline , pH 7.4, 150mM NaCl, 0.02% sodium azide and 50% glycerol. Store at -20 °C. Stable for 12 months from date of receipt. | |
| Purification: | The antiserum was purified by peptide affinity chromatography using SulfoLink™ Coupling Resin (Thermo Fisher Scientific). | |
| Immunogen: | A synthesized peptide derived from human AKAP3, corresponding to a region within the internal amino acids. | |
| Uniprot: | O75969 | |
| Description: | May function as a regulator of both motility- and head- associated functions such as capacitation and the acrosome reaction. | |



Western blot analysis of extracts from HepG2, using AKAP3 Ab. Lane 1 was treated with the antigen-specific peptide.



AF0529 at 1/100 staining Rat heart tissue by IHC-P. The sample was formaldehyde fixed and a heat mediated antigen retrieval step in citrate buffer was performed. The sample was then blocked and incubated with the primary Ab at 4°C overnight. An HRP conjugated anti-Rabbit Ab was used as the secondary Ab.

IMPORTANT: For western blot, incubate membrane with diluted primary Ab in 5% w/v milk , 1X TBS, 0.1% Tween@20 at 4°C with gentle shaking, overnight.



Affinity Biosciences
website: www.affbiotech.com
order: order@affbiotech.com

procedures. Not for resale without express authorization.