

GAD1 Ab

[References\(1\)](#) [Images\(4\)](#)

| | | |
|---------------|-----------------|-----------------------|
| Cat.#: AF0163 | Concn.: ~1mg/ml | Mol.Wt.: 67kDa |
| Size: | Source: Rabbit | Clonality: Polyclonal |

Application: WB 1:500-1:3000, IHC 1:50-1:200, IF/ICC 1:100-1:500
*The optimal dilutions should be determined by the end user.

Reactivity: Human,Mouse,Rat

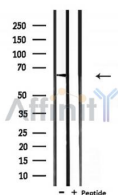
Storage: Rabbit IgG in phosphate buffered saline , pH 7.4, 150mM NaCl, 0.02% sodium azide and 50% glycerol. Store at -20 °C. Stable for 12 months from date of receipt.

Purification: The antiserum was purified by peptide affinity chromatography using SulfoLink™ Coupling Resin (Thermo Fisher Scientific).

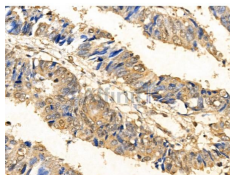
Immunogen: A synthesized peptide derived from human GAD1, corresponding to a region within C-terminal amino acids.

Uniprot: Q99259

Description: GAD67 Catalyzes the production of GABA. Belongs to the group II decarboxylase family. Homodimer. 3 isoforms of the human protein are produced by alternative splicing.



Western blot analysis of extracts from mouse liver, using GAD1 Ab.



AF0163 at 1/100 staining Human colorectal cancer by IHC-P. The sample was formaldehyde fixed and a heat mediated antigen retrieval step in citrate buffer was performed. The sample was then blocked and incubated with the primary Ab at 4°C overnight. An HRP conjugated anti-Rabbit Ab was used as the secondary Ab.

IMPORTANT: For western blot, incubate membrane with diluted primary Ab in 5% w/v milk , 1X TBS, 0.1% Tween@20 at 4°C with gentle shaking, overnight.



Affinity Biosciences

website: www.affbiotech.com

order: order@affbiotech.com

For Research Use Only. Not for use in diagnostic and therapeutic procedures. Not for resale without express authorization.