

Galectin 3 Ab

[Images\(10\)](#)

| | | |
|---------------|-----------------|-----------------------|
| Cat.#: AF0164 | Concn.: ~1mg/ml | Mol.Wt.: 27kDa |
| Size: | Source: Rabbit | Clonality: Polyclonal |

Application: WB 1:500-1:3000, IHC 1:50-1:200, IF/ICC: 1:100-1:500
*The optimal dilutions should be determined by the end user.

Reactivity: Human, Mouse, Rat

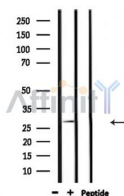
Storage: Rabbit IgG in phosphate buffered saline, pH 7.4, 150mM NaCl, 0.02% sodium azide and 50% glycerol. Store at -20 °C. Stable for 12 months from date of receipt.

Purification: The antiserum was purified by peptide affinity chromatography using SulfoLink™ Coupling Resin (Thermo Fisher Scientific).

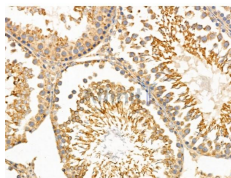
Immunogen: A synthesized peptide derived from human Galectin 3, corresponding to a region within the internal amino acids.

Uniprot: P17931

Description: galectin-3 galactose-specific lectin which binds IgE. Expressed at a high level in the colonic epithelium. Also abundant in activated macrophages.



Western blot analysis of extracts from rat brain, using Galectin 3 Ab.



AF0164 at 1/100 staining Rat testis tissue by IHC-P. The sample was formaldehyde fixed and a heat mediated antigen retrieval step in citrate buffer was performed. The sample was then blocked and incubated with the primary Ab at 4°C overnight. An HRP conjugated anti-Rabbit Ab was used as the secondary Ab.

IMPORTANT: For western blot, incubate membrane with diluted primary Ab in 5% w/v milk, 1X TBS, 0.1% Tween@20 at 4°C with gentle shaking, overnight.

procedures. Not for resale without express authorization.