

## Phospho-BRK (Tyr342) Ab

[Images\(3\)](#)

Cat.#: AF8134  
Size: 100ul,200ul

Concn.: ~1mg/ml  
Source: Rabbit

Mol.Wt.: 52kDa  
Clonality: Polyclonal

Application: WB 1:1000-3000, IHC 1:50-1:200, IF/ICC 1:100-1:500, ELISA(peptide)  
1:20000-1:40000  
\*The optimal dilutions should be determined by the end user.

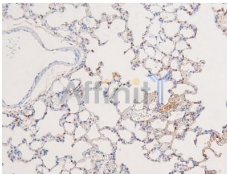
Reactivity: Human,Mouse,Rat

Purification: The Ab is from purified rabbit serum by affinity purification via sequential chromatography on phospho-peptide and non-phospho-peptide affinity columns.

Immunogen: A synthesized peptide derived from human BRK around the phosphorylation site of Tyr342.

Uniprot: Q13882

Storage: Rabbit IgG in phosphate buffered saline , pH 7.4, 150mM NaCl, 0.02% sodium azide and 50% glycerol. Store at -20 °C. Stable for 12 months from date of receipt.



AF8134 at 1/200 staining Rat lung tissue sections by IHC-P. The tissue was formaldehyde fixed and a heat mediated antigen retrieval step in citrate buffer was performed. The tissue was then blocked and incubated with the Ab for 1.5 hours at 22°C. An HRP conjugated goat anti-rabbit Ab was used as the secondary Ab.

**IMPORTANT:** For western blot, incubate membrane with diluted primary Ab in 5% w/v milk , 1X TBS, 0.1% Tween@20 at 4°C with gentle shaking, overnight.

For Research Use Only. Not for use in diagnostic and therapeutic procedures. Not for resale without express authorization.