

## Phospho-Raptor (Ser792) Ab

[Images\(3\)](#)

Cat.#: AF8350  
 Size: 100ul,200ul

Concn.: ~1mg/ml  
 Source: Rabbit

Mol.Wt.: 149kDa  
 Clonality: Polyclonal

**Application:** WB 1:1000-3000, IHC 1:50-1:200, ELISA(peptide) 1:20000-1:40000  
 \*The optimal dilutions should be determined by the end user.

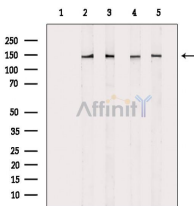
**Reactivity:** Human,Rat

**Purification:** The Ab is from purified rabbit serum by affinity purification via sequential chromatography on phospho-peptide and non-phospho-peptide affinity columns.

**Immunogen:** A synthesized peptide derived from human Raptor around the phosphorylation site of Ser792.

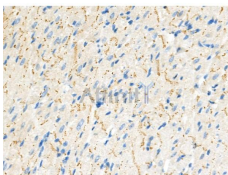
**Uniprot:** Q8N122

**Storage:** Rabbit IgG in phosphate buffered saline , pH 7.4, 150mM NaCl, 0.02% sodium azide and 50% glycerol. Store at -20 °C. Stable for 12 months from date of receipt.



Western blot analysis of extracts from various samples, using Phospho-Raptor (Ser792) Ab.

Lane 1: HepG2 cells(h2o2 treatment), blocked with antigen-specific peptides,  
 Lane 2: HepG2 cells(h2o2 treatment),  
 Lane 3: HepG2 cells(uv treatment),  
 Lane 4: A549 cells(h2o2 treatment),  
 Lane 5: Pc12.



AF8350 at 1/100 staining Rat heart tissue by IHC-P. The sample was formaldehyde fixed and a heat mediated antigen retrieval step in citrate buffer was performed. The sample was then blocked and incubated with the primary Ab at 4°C overnight. An HRP conjugated anti-Rabbit Ab was used as the secondary Ab.

**IMPORTANT:** For western blot, incubate membrane with diluted primary Ab in 5% w/v milk , 1X TBS, 0.1% Tween@20 at 4°C with gentle shaking, overnight.

For Research Use Only. Not for use in diagnostic and therapeutic procedures. Not for resale without express authorization.