

## TLS/FUS Ab

[Images\(3\)](#)

Cat.#: DF8391                      Concn.: ~1mg/ml                      Mol.Wt.: 53 kDa  
Size: 100ul,200ul                      Source: Rabbit                      Clonality: Polyclonal

Application:                      WB 1:1000-3000, IHC 1:200, IF/ICC 1:100-1:500, ELISA(peptide)  
1:20000-1:40000

\*The optimal dilutions should be determined by the end user.

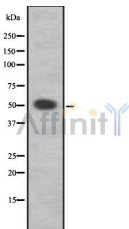
Reactivity:                      Human,Mouse

Purification:                      The antiserum was purified by peptide affinity chromatography using  
SulfoLink™ Coupling Resin (Thermo Fisher Scientific).

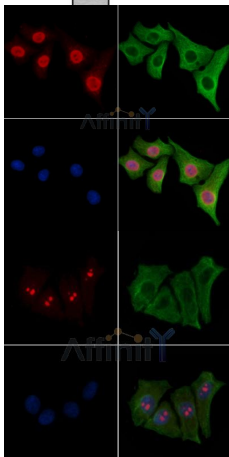
Immunogen:                      A synthesized peptide derived from human TLS/FUS, corresponding to a  
region within C-terminal amino acids.

Uniprot:                      P35637

Storage:                      Rabbit IgG in phosphate buffered saline , pH 7.4, 150mM NaCl, 0.02%  
sodium azide and 50% glycerol. Store at -20 °C. Stable for 12 months from  
date of receipt.



Western blot analysis FUS using K562 whole cell lysates



DF8391 staining HeLa cells by IF/ICC. The samples were fixed with PFA and permeabilized in 0.1% Triton X-100, then blocked in 10% serum for 45 minutes at 25°C. Samples were then incubated with primary Ab(DF8391) and mouse anti-beta tubulin Ab(T0023) for 1 hour at 37°C. An AlexaFluor594 conjugated goat anti-rabbit IgG(H+L) Ab(Red) and an AlexaFluor488 conjugated goat anti-mouse IgG(H+L) Ab(Green) were used as the secondary Ab.

The nuclear counter stain is DAPI (blue).

DF8391 staining HepG2 cells(30min of 4uM Forskolin treatment) by IF/ICC. The samples were fixed with PFA and permeabilized in 0.1% Triton X-100, then blocked in 10% serum for 45 minutes at 25°C. Samples were then incubated with primary Ab(DF8391) and mouse anti-beta tubulin Ab(T0023) for 1 hour at 37°C. An AlexaFluor594 conjugated goat anti-rabbit IgG(H+L) Ab(Red) and an AlexaFluor488 conjugated goat anti-mouse IgG(H+L) Ab(Green) were used as the secondary Ab.

The nuclear counter stain is DAPI(blue).

**IMPORTANT:** For western blot, incubate membrane with diluted primary Ab in 5% w/v milk , 1X TBS, 0.1% Tween@20 at 4°C with gentle shaking, overnight.

For Research Use Only. Not for use in diagnostic and therapeutic procedures. Not for resale without express authorization.