

Acrosin Ab

[Images\(2\)](#)

Cat.#: AF9003
Size: 100ul,200ul,50ul

Concn.: ~1mg/ml
Source: Rabbit

Mol.Wt.: 45kDa
Clonality: Polyclonal

Application: WB 1:1000, IHC 1:200, IF/ICC 1:100-1:500, ELISA(peptide)
1:20000-1:40000

*The optimal dilutions should be determined by the end user.

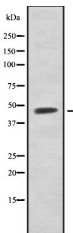
Reactivity: Human

Purification: The antiserum was purified by peptide affinity chromatography using SulfoLink™ Coupling Resin (Thermo Fisher Scientific).

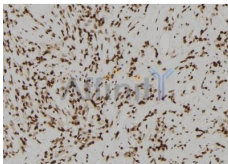
Immunogen: A synthesized peptide derived from human Acrosin, corresponding to a region within N-terminal amino acids.

Uniprot: P10323

Storage: Rabbit IgG in phosphate buffered saline , pH 7.4, 150mM NaCl, 0.02% sodium azide and 50% glycerol. Store at -20 °C. Stable for 12 months from date of receipt.



Western blot analysis of Acrosin using COLO205 whole cell lysates



AF9003 at 1/100 staining Human gastric tissue by IHC-P. The sample was formaldehyde fixed and a heat mediated antigen retrieval step in citrate buffer was performed. The sample was then blocked and incubated with the Ab for 1.5 hours at 22°C. An HRP conjugated goat anti-rabbit Ab was used as the secondary Ab.

IMPORTANT: For western blot, incubate membrane with diluted primary Ab in 5% w/v milk , 1X TBS, 0.1% Tween@20 at 4°C with gentle shaking, overnight.

For Research Use Only. Not for use in diagnostic and therapeutic procedures. Not for resale without express authorization.