

C9orf72 Ab

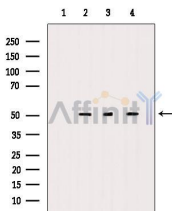
[Images\(9\)](#)

Cat.#: DF12112
Size: 100ul,200ul,50ul

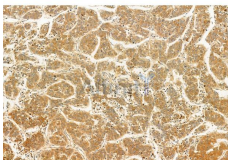
Concn.: ~1mg/ml
Source: Rabbit

Mol.Wt.: 50-54 kDa,25-30 kDa
Clonality: Polyclonal

Application:	WB 1:500-1:2000, IHC 1:50-1:200 *The optimal dilutions should be determined by the end user.
Reactivity:	Human,Mouse,Rat
Purification:	The antiserum was purified by peptide affinity chromatography using SulfoLink™ Coupling Resin (Thermo Fisher Scientific).
Immunogen:	A synthesized peptide derived from human C9orf72, corresponding to a region within the internal amino acids.
Uniprot:	Q96LT7
Storage:	Rabbit IgG in phosphate buffered saline , pH 7.4, 150mM NaCl, 0.02% sodium azide and 50% glycerol. Store at -20 °C. Stable for 12 months from date of receipt.



Western blot analysis of extracts from various samples, using C9orf72 Ab.
Lane 1: HepG2, treated with blocking peptide;
Lane 2: HepG2;
Lane 3: Mouse heart;
Lane 4: Mcf7.



DF12112 at 1/100 staining Human liver cancer by IHC-P. The sample was formaldehyde fixed and a heat mediated antigen retrieval step in citrate buffer was performed. The sample was then blocked and incubated with the primary Ab at 4°C overnight. An HRP conjugated anti-Rabbit Ab was used as the secondary Ab.

IMPORTANT: For western blot, incubate membrane with diluted primary Ab in 5% w/v milk , 1X TBS, 0.1% Tween@20 at 4°C with gentle shaking, overnight.

For Research Use Only. Not for use in diagnostic and therapeutic procedures. Not for resale without express authorization.