

## Rabbit Loading Control Panel Kit

### Introduction

The kit contains three commonly used internal control antibodies, 30ul each.

	Cat.#	Product	Source	Size	Application	Reactivity
1	AF7018	Beta-actin Ab	Rabbit	30ulx1	WB,IHC,IF/ICC	<a href="#">Refer to the manual</a>
2	AF7011	Beta-tubulin Ab	Rabbit	30ulx1	WB,IHC,IF/ICC	<a href="#">Refer to the manual</a>
3	AF7021	GAPDH Ab	Rabbit	30ulx1	WB,IHC,IF/ICC	<a href="#">Refer to the manual</a>

### Important Product Information

Details please refer to the product manual.

### Storage

-20°C



Affinity Biosciences.  
Email: [info@affbiotech.com](mailto:info@affbiotech.com)  
Website: [www.affbiotech.com](http://www.affbiotech.com)



## beta Actin Ab - AF7018

Cat.#: AF7018

Size: 50ul,100ul,200ul,1ml

Concn.: 1mg/ml

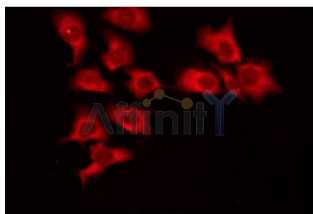
Source: Rabbit

Mol Weight: 43kDa

Clonality: Polyclonal

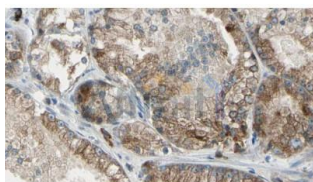
<b>Application:</b>	WB 1:3000-1:20000, IHC 1:200, IF/ICC 1:100-1:500 *The optimal dilutions should be determined by the end user.
<b>Reactivity:</b>	Human,Mouse,Rat,Pig,Zebrafish,Bovine,Rabbit,Dog,Monkey,Fish
<b>Purification:</b>	The antiserum was purified by peptide affinity chromatography using SulfoLink™ Coupling Resin (Thermo Fisher Scientific).
<b>Specificity:</b>	Beta actin Ab detects endogenous levels of total Beta actin.
<b>Immunogen:</b>	A synthesized peptide derived from human Beta actin.
<b>Uniprot:</b>	P60709
<b>RRID:</b>	AB_2839420
<b>Description:</b>	Actin, a ubiquitous eukaryotic protein, is the major component of the cytoskeleton. At least six isoforms are known in mammals. Nonmuscle $\beta$ - and $\gamma$ -actin, also known as cytoplasmic actin, are predominantly expressed in nonmuscle cells, controlling cell structure and motility.
<b>Storage Buffer:</b>	Rabbit IgG in phosphate buffered saline , pH 7.4, 150mM NaCl, 0.02% sodium azide and 50% glycerol.Store at -20 °C.Stable for 12 months from date of receipt.

## Verification Results For beta Actin Ab - AF7018



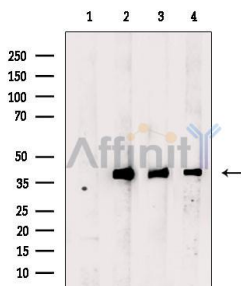
Application: IF/ICC.

AF7018 staining HEPC2 cells by ICC/IF. The sample were fixed with PFA and permeabilized in 0.1% Triton X-100, then blocked in 10% serum for 45 minutes at 25°C. The primary Ab was diluted at 1/200 and incubated with the sample for 1 hour at 37°C. An Alexa Fluor 594 conjugated goat anti-rabbit IgG (H+L) Ab (Red), diluted at 1/600 was used as secondary Ab.



Application: IHC.

AF7018 at 1/100 staining Human prostate tissue by IHC-P. The sample was formaldehyde fixed and a heat mediated antigen retrieval step in citrate buffer was performed. The sample was then blocked and incubated with the Ab for 1.5 hours at 22°C. An HRP conjugated goat anti-rabbit Ab was used as the secondary Ab.



Application: WB.

Western blot analysis of extracts from various samples, using beta Actin Ab.

Lane 1: Hela cells, blocked with antigen-specific peptides,

Lane 2: Hela cells,

Lane 3: Rat liver,

Lane 4: MCF7 cells.

For more information, please scan the QR code to visit our official website.



**IMPORTANT:** For western blots, incubate membrane with diluted Ab in 5% w/v milk, 1X TBS, 0.1% Tween@20 at 4°C with gentle shaking, overnight.

For Research Use Only.  
Not for use in diagnostic and therapeutic procedures.  
Not for resale without express authorization.



Affinity Biosciences.  
Email: [info@affbiotech.com](mailto:info@affbiotech.com)  
Website: [www.affbiotech.com](http://www.affbiotech.com)



## GAPDH Ab - AF7021

Cat.#: AF7021  
Size: 50ul,100ul,200ul

Concn.: 1mg/ml  
Source: Rabbit

Mol Weight: 37kDa  
Clonality: Polyclonal

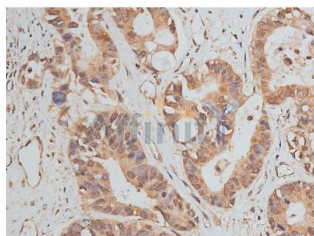
<b>Application:</b>	WB 1:3000-1:30000, IHC 1:200, IF/ICC 1:200, ELISA(peptide) 1:20000-1:40000 *The optimal dilutions should be determined by the end user.
<b>Reactivity:</b>	Human,Mouse,Rat,Pig,Bovine,Goat,Monkey,Chicken
<b>Purification:</b>	The antiserum was purified by peptide affinity chromatography using SulfoLink™ Coupling Resin (Thermo Fisher Scientific).
<b>Specificity:</b>	GAPDH Ab detects endogenous levels of total GAPDH.
<b>Immunogen:</b>	A synthesized peptide derived from human GAPDH.
<b>Uniprot:</b>	P04406
<b>RRID:</b>	AB_2839421
<b>Description:</b>	Glyceraldehyde 3 phosphate dehydrogenase (GAPDH) is well known as one of the key enzymes involved in glycolysis. As well as functioning as a glycolytic enzyme in cytoplasm, recent evidence suggests that mammalian GAPDH is also involved in a great number of intracellular processes such as membrane fusion, microtubule bundling, phosphotransferase activity, nuclear RNA export, DNA replication, and DNA repair.
<b>Storage Buffer:</b>	Rabbit IgG in phosphate buffered saline, pH 7.4, 150mM NaCl, 0.02% sodium azide and 50% glycerol. Store at -20 °C. Stable for 12 months from date of receipt.

## Verification Results For GAPDH Ab - AF7021



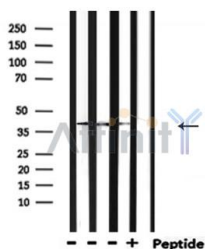
Application: IF/ICC.

AF7021 staining Hela by IF/ICC. The sample were fixed with PFA and permeabilized in 0.1% Triton X-100, then blocked in 10% serum for 45 minutes at 25°C. The primary Ab was diluted at 1/200 and incubated with the sample for 1 hour at 37°C. An Alexa Fluor 594 conjugated goat anti-rabbit IgG (H+L) Ab, diluted at 1/600, was used as the secondary Ab.



Application: IHC.

AF7021 at 1/50 staining human colon cancer tissue sections by IHC-P. The tissue was formaldehyde fixed and a heat mediated antigen retrieval step in citrate buffer was performed. The tissue was then blocked and incubated with the Ab for 1.5 hours at 22°C. An HRP conjugated goat anti-rabbit Ab was used as the secondary Ab.



Application: WB.

Western blot analysis of extracts from rat brain, mouse muscle, rat liver, using GAPDH Ab.

For more information, please scan the QR code to visit our official website.



**IMPORTANT:** For western blots, incubate membrane with diluted Ab in 5% w/v milk , 1X TBS, 0.1% Tween@20 at 4°C with gentle shaking, overnight.

For Research Use Only.  
Not for use in diagnostic and therapeutic procedures.  
Not for resale without express authorization.



Affinity Biosciences.  
Email: [info@affbiotech.com](mailto:info@affbiotech.com)  
Website: [www.affbiotech.com](http://www.affbiotech.com)



## Tubulin beta Ab - AF7011

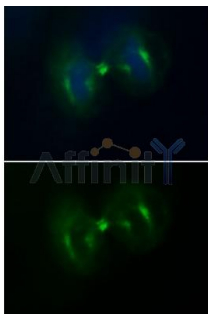
Cat.#: AF7011  
Size: 50ul,100ul,200ul

Concn.: 1mg/ml  
Source: Rabbit

Mol Weight: 55kDa  
Clonality: Polyclonal

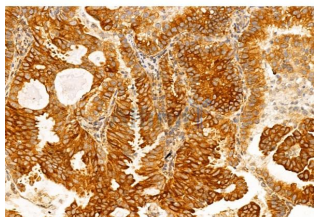
<b>Application:</b>	WB 1:1000-1:5000, IHC 1:50-1:200, IF/ICC 1:100-1:500, ELISA(peptide) 1:20000-1:40000 *The optimal dilutions should be determined by the end user.
<b>Reactivity:</b>	Human,Mouse,Rat
<b>Purification:</b>	The antiserum was purified by peptide affinity chromatography using SulfoLink™ Coupling Resin (Thermo Fisher Scientific).
<b>Specificity:</b>	Tubulin beta Ab detects endogenous levels of total Tubulin beta.
<b>Immunogen:</b>	A synthesized peptide derived from human Tubulin beta.
<b>Uniprot:</b>	P07437
<b>RRID:</b>	AB_2827688
<b>Description:</b>	TUBB3 Tubulin is the major constituent of microtubules. It binds two moles of GTP, one at an exchangeable site on the beta chain and one at a non-exchangeable site on the alpha-chain. TUBB3 plays a critical role in proper axon guidance and maintenance.
<b>Storage Buffer:</b>	Rabbit IgG in phosphate buffered saline , pH 7.4, 150mM NaCl, 0.02% sodium azide and 50% glycerol.Store at -20 °C.Stable for 12 months from date of receipt.

## Verification Results For Tubulin beta Ab - AF7011



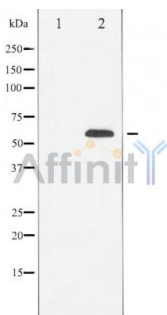
Application: IF/ICC.

Immunofluorescence analysis of HepG2 cells during mitosis, using tubulin rabbit pAb. Green: Goat Anti-Rabbit IgG(H+L) Alexa Fluor488. Blue: DAPI.



Application: IHC.

AF7011 at 1/100 staining Human normal tissues adjacent to lung cancer by IHC-P. The sample was formaldehyde fixed and a heat mediated antigen retrieval step in citrate buffer was performed. The sample was then blocked and incubated with the primary Ab at 4°C overnight. An HRP conjugated anti-Rabbit Ab was used as the secondary Ab.



Application: WB.

Western blot analysis of Tubulin beta expression in Mouse Brain, whole cell lysates. The lane on the left was treated with the antigen-specific peptide.

For more information, please scan the QR code to visit our official website.



**IMPORTANT:** For western blots, incubate membrane with diluted Ab in 5% w/v milk, 1X TBS, 0.1% Tween@20 at 4°C with gentle shaking, overnight.

For Research Use Only.  
Not for use in diagnostic and therapeutic procedures.  
Not for resale without express authorization.