

## Mouse Loading Control Panel Kit

### Introduction

The kit contains three commonly used internal control antibodies, 30ul each.

	Cat.#	Product	Source	Size	Application	Reactivity
1	T0022	Beta-actin Ab	Mouse	30ulx1	WB,IHC,IF/ICC	<a href="#">Refer to the manual</a>
2	T0023	Beta-tubulin Ab	Mouse	30ulx1	WB,IHC,IF/ICC	<a href="#">Refer to the manual</a>
3	T0004	GAPDH Ab	Mouse	30ulx1	WB	<a href="#">Refer to the manual</a>

### Important Product Information

Details please refer to the product manual.

### Storage

-20°C



Affinity Biosciences.  
Email: [info@affbiotech.com](mailto:info@affbiotech.com)  
Website: [www.affbiotech.com](http://www.affbiotech.com)



## beta-Actin Ab - T0022

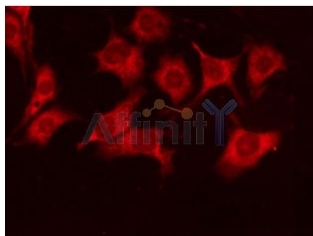
Cat.#: T0022  
Size: 50ul,100ul,200ul

Concn.: 1mg/ml  
Source: Mouse

Mol Weight: 43KD  
Clonality: Monoclonal

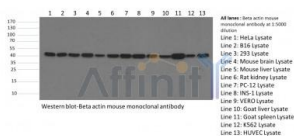
<b>Application:</b>	WB: 1:3000-1:10000, IHC: 1:200, IF/ICC: 1:200 *The optimal dilutions should be determined by the end user.
<b>Reactivity:</b>	Human,Mouse,Rat,Pig,Zebrafish,Bovine,Sheep,Rabbit,Goat,Guinea pig,Dog,Monkey,Hamster,Chicken,Fish
<b>Purification:</b>	Affinity-chromatography.
<b>Specificity:</b>	beta-Actin Mouse Monoclonal Ab detects endogenous levels of total beta-Actin protein.
<b>Immunogen:</b>	Full-length beta-Actin protein of human.
<b>Uniprot:</b>	P60709
<b>RRID:</b>	AB_2839417
<b>Description:</b>	beta-Actin is one of six different actin isoforms that have been identified. The actin molecules found in cells of various species and tissues tend to be very similar in their immunological and physical properties. Therefore, Antibodies against beta-Actin are useful as loading controls for Western Blotting. However it should be noted that levels of beta-Actin may not be stable in certain cells. For example, expression of beta-Actin in adipose tissue is very low and therefore it should not be used as loading control for these tissues.
<b>Storage Buffer:</b>	Mouse IgG1 in phosphate buffered saline (without Mg <sup>2+</sup> and Ca <sup>2+</sup> ), pH 7.4, 150mM NaCl, 0.02% sodium azide and 50% glycerol.Store at -20 °C.Stable for 24 months from date of receipt.

## Verification Results For beta-Actin Ab - T0022



Application: IF/ICC.

IF analysis of HeLa with T0022 diluted at 1:500.



Application: WB.

Western blot analysis of various lysates, using beta-Actin Mouse Monoclonal Ab.

For more information, please scan the QR code to visit our official website.



**IMPORTANT:** For western blots, incubate membrane with diluted Ab in 5% w/v milk, 1X TBS, 0.1% Tween@20 at 4°C with gentle shaking, overnight.

For Research Use Only.  
Not for use in diagnostic and therapeutic procedures.  
Not for resale without express authorization.



Affinity Biosciences.  
Email: [info@affbiotech.com](mailto:info@affbiotech.com)  
Website: [www.affbiotech.com](http://www.affbiotech.com)



## beta-Tubulin Ab - T0023

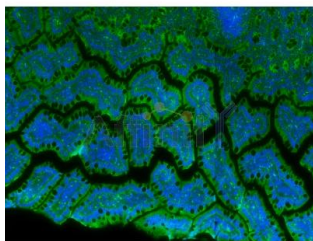
Cat.#: T0023  
Size: 100ul,200ul,50ul

Concn.: 1mg/ml  
Source: Mouse

Mol Weight: 55KD  
Clonality: Monoclonal

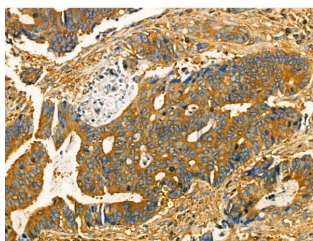
<b>Application:</b>	WB: 1:10000-1:500000, IHC: 1:200, IF/ICC: 1:200 *The optimal dilutions should be determined by the end user.
<b>Reactivity:</b>	Human,Mouse,Rat,Sheep,Rabbit,Dog,Monkey,Hamster,Chicken
<b>Purification:</b>	Affinity-chromatography.
<b>Specificity:</b>	beta-Tubulin Mouse Monoclonal Ab detects endogenous levels of total beta-Tubulin protein.
<b>Immunogen:</b>	Full-length beta-tubulin protein of human.
<b>Uniprot:</b>	P07437
<b>RRID:</b>	AB_2813772
<b>Description:</b>	Microtubules are constituent parts of the mitotic apparatus, cilia, flagella, and elements of the cytoskeleton. They consist principally of 2 soluble proteins, alpha- and beta-tubulin, each of about 55,000 kDa. Antibodies against beta Tubulin are useful as loading controls for Western Blotting. However it should be noted that levels of beta-Tubulin may not be stable in certain cells. For example, expression of beta-Tubulin in adipose tissue is very low and therefore beta-Tubulin should not be used as loading control for these tissues.
<b>Storage Buffer:</b>	Mouse IgG1 in phosphate buffered saline (without Mg <sup>2+</sup> and Ca <sup>2+</sup> ), pH 7.4, 150mM NaCl.

## Verification Results For beta-Tubulin Ab - T0023



Application: IF/ICC.

IF/ICC staining of rat intestine tissue using beta-Tubulin Mouse Monoclonal Ab.



Application: IHC.

T0023 at 1/100 staining Human colorectal cancer by IHC-P. The sample was formaldehyde fixed and a heat mediated antigen retrieval step in citrate buffer was performed. The sample was then blocked and incubated with the primary Ab at 4°C overnight. An HRP conjugated anti-Mouse Ab was used as the secondary Ab.



Application: WB.

Western blot analysis of hsc70 using various lysates.

Lanes 1 - 2: Merged signal (red and green).

Green - AF5187 observed at 70kDa.

Red - loading control, T0023, observed at 55 kDa.

Blots were developed with Goat Anti-Rabbit IgG(H+L) FITC –conjugated (S0008) and Goat Anti-Mouse IgG(H+L) Alexa Fluor 594–conjugated (S0005) secondary antibodies

For more information, please scan the QR code to visit our official website.



**IMPORTANT:** For western blots, incubate membrane with diluted Ab in 5% w/v milk , 1X TBS, 0.1% Tween@20 at 4°C with gentle shaking,overnight.

For Research Use Only.  
Not for use in diagnostic and therapeutic procedures.  
Not for resale without express authorization.



Affinity Biosciences.  
Email: [info@affbiotech.com](mailto:info@affbiotech.com)  
Website: [www.affbiotech.com](http://www.affbiotech.com)



## GAPDH Ab - T0004

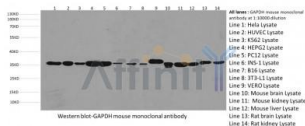
Cat.#: T0004  
Size: 50ul,100ul,200ul

Concn.: 1mg/ml  
Source: Mouse

Mol Weight: 34KD  
Clonality: Monoclonal

<b>Application:</b>	WB: 1:3000-1:10000  *The optimal dilutions should be determined by the end user.
<b>Reactivity:</b>	Human,Mouse,Rat,Pig,Bovine,Sheep,Rabbit,Goat,Guinea pig,Dog,Monkey,Hamster,Chicken,Plants,Rice,Fish
<b>Purification:</b>	Affinity-chromatography.
<b>Specificity:</b>	GAPDH Mouse Monoclonal Ab detects endogenous levels of total GAPDH protein.
<b>Immunogen:</b>	Full-length GAPDH protein of human.
<b>Uniprot:</b>	P04406
<b>RRID:</b>	AB_2833041
<b>Description:</b>	Glyceraldehyde 3 phosphate dehydrogenase (GAPDH) is well known as one of the key enzymes involved in glycolysis. GAPDH is constitutively abundant expressed in almost cell types at high levels, therefore antibodies against GAPDH are useful as loading controls for Western Blotting. Some pathology factors, such as hypoxia and diabetes, increased or decreased GAPDH expression in certain cell types.
<b>Storage Buffer:</b>	Mouse IgG1 in phosphate buffered saline (without Mg <sup>2+</sup> and Ca <sup>2+</sup> ), pH 7.4, 150mM NaCl, 0.02% sodium azide and 50% glycerol.Store at -20 °C.Stable for 12 months from date of receipt.

## Verification Results For GAPDH Ab - T0004



Application: WB.

Western blot analysis of various lysates, using GAPDH Mouse Monoclonal Ab.

For more information, please scan the QR code to visit our official website.



**IMPORTANT:** For western blots, incubate membrane with diluted Ab in 5% w/v milk , 1X TBS, 0.1% Tween@20 at 4°C with gentle shaking, overnight.

For Research Use Only.  
Not for use in diagnostic and therapeutic procedures.  
Not for resale without express authorization.